

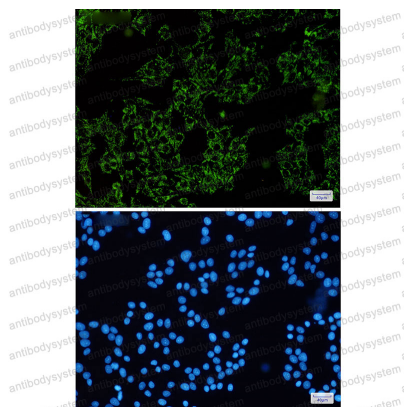
Anti-SGSM1 Antibody (R2H66)

Summary

Catalog No.	RHH50301
Clone ID	R2H66
Host species	Rabbit
Tested applications	IF: 1:50-1:200, WB: 1:500-1:1000
Species reactivity	Human
Form	Liquid
Storage buffer	0.01M PBS, pH 7.4, 0.05% BSA, 50% Glycerol, 0.05% Sodium azide.
Concentration	1 mg/ml
Purity	>95% by SDS-PAGE.
Clonality	Monoclonal
Isotype	IgG
Applications	IF, WB
Target	Small G protein signaling modulator 1, KIAA1941, SGSM1, RUTBC2, RUN and TBC1 domain-containing protein 2
Purification	Protein A/G purified from cell culture supernatant.
Endotoxin level	Please contact with the lab for this information.
Accession	Q2NKQ1
Stability and Storage	Use a manual defrost freezer and avoid repeated freeze thaw cycles. Store at 4 °C for frequent use. Store at -20 °C for twelve months from the date of receipt.

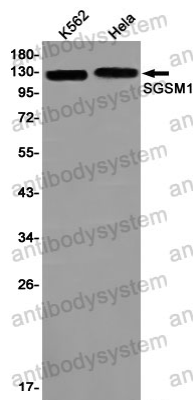
Note For research use only.

Data Image



Immunofluorescence

Immunocytochemistry analysis of SGSM1(green) in HeLa using SGSM1 antibody, and DAPI(blue)



Western blot

Western blot analysis of SGSM1 in K562, HeLa lysates using SGSM1 antibody.