

Anti-IMMT Antibody (R2H63)

Summary

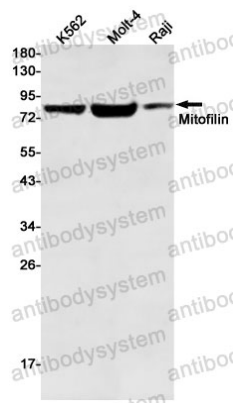
Catalog No.	RHH40201
Clone ID	R2H63
Host species	Rabbit
Tested applications	WB: 1:500-1:1000
Species reactivity	Human
Form	Liquid
Storage buffer	0.01M PBS, pH 7.4, 0.05% BSA, 50% Glycerol, 0.05% Sodium azide.
Concentration	1 mg/ml
Purity	>95% by SDS-PAGE.
Clonality	Monoclonal
Isotype	IgG
Applications	WB
Target	p87/89, Mitofilin, Mitochondrial inner membrane protein, IMMT, HMP, MICOS complex subunit MIC60, Cell proliferation-inducing gene 4/52 protein, MIC60, MINOS2
Purification	Protein A/G purified from cell culture supernatant.
Endotoxin level	Please contact with the lab for this information.
Accession	Q16891

Stability and Storage

Use a manual defrost freezer and avoid repeated freeze thaw cycles. Store at 4 °C for frequent use. Store at -20 °C for twelve months from the date of receipt.

Note

For research use only.

Data Image

Western blot

Western blot analysis of Mitofilin in K562, Molt4, Raji lysates using Mitofilin antibody.