

Anti-PFKFB3 Antibody (R2H60)

Summary

Catalog No.	RHH39601
Clone ID	R2H60
Host species	Rabbit
Tested applications	IP: 1:20, WB: 1:500-1:1000
Species reactivity	Human, Mouse, Rat
Form	Liquid
Storage buffer	0.01M PBS, pH 7.4, 0.05% BSA, 50% Glycerol, 0.05% Sodium azide.
Concentration	1 mg/ml
Purity	>95% by SDS-PAGE.
Clonality	Monoclonal
Isotype	IgG
Applications	IP, WB
Target	Renal carcinoma antigen NY-REN-56, 6-phosphofructo-2-kinase/fructose-2,6-bisphosphatase 3, 6PF-2-K/Fru-2,6-P2ase brain/placenta-type isozyme, iPFK-2, PFKFB3, 6PF-2-K/Fru-2,6-P2ase 3, PFK/FBPase 3
Purification	Protein A/G purified from cell culture supernatant.
Endotoxin level	Please contact with the lab for this information.
Accession	Q16875

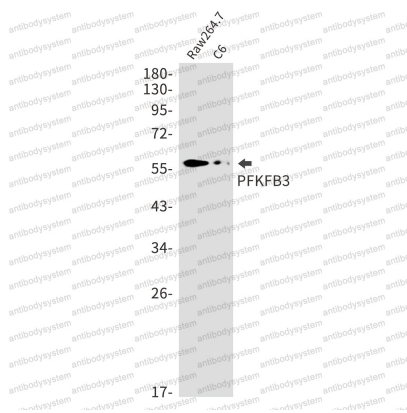
Stability and Storage

Use a manual defrost freezer and avoid repeated freeze thaw cycles. Store at 4 °C for frequent use. Store at -20 °C for twelve months from the date of receipt.

Note

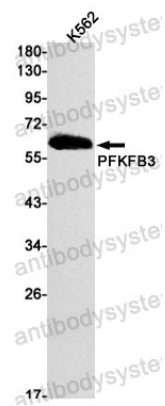
For research use only.

Data Image



Western blot

Western blot analysis of PFKFB3 in Raw264.7, C6 lysates using PFKFB3 antibody.



Western blot

Western blot analysis of PFKFB3 in K562 lysates using PFKFB3 antibody.