

Anti-CA9 Antibody (R2H56)

Summary

Catalog No.	RHH37201
Clone ID	R2H56
Host species	Rabbit
Tested applications	IHC: 1:100-1:200, WB: 1:1000-1:2000
Species reactivity	Human
Form	Liquid
Storage buffer	0.01M PBS, pH 7.4, 0.05% BSA, 50% Glycerol, 0.05% Sodium azide.
Concentration	1 mg/ml
Purity	>95% by SDS-PAGE.
Clonality	Monoclonal
Isotype	IgG
Applications	IHC, WB
Target	Membrane antigen MN, P54/58N, Carbonic anhydrase 9, Renal cell carcinoma-associated antigen G250, CA-IX, CAIX, pMW1, Carbonic anhydrase IX, RCC-associated antigen G250, Carbonate dehydratase IX, CA9, MN, G250
Purification	Protein A/G purified from cell culture supernatant.
Endotoxin level	Please contact with the lab for this information.
Accession	Q16790

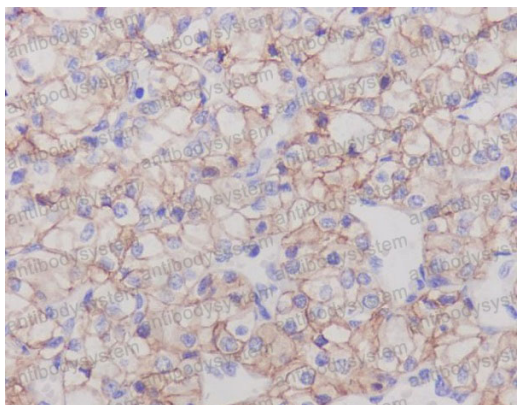
Recombinant Proteins & Antibodies

Stability and Storage

Use a manual defrost freezer and avoid repeated freeze thaw cycles. Store at 4 °C for frequent use. Store at -20 °C for twelve months from the date of receipt.

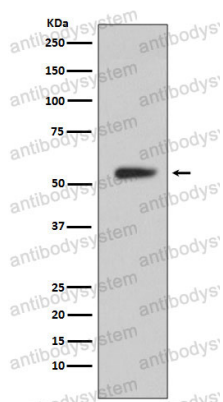
Note

For research use only.

Data Image

Immunohistochemical

Immunohistochemical analysis of paraffin-embedded human kidney cancer, using CA9 Antibody.



Western blot

Western blot analysis of CA9 expression in Human stomach lysate.