

Anti-CLPP Antibody (R2H46)

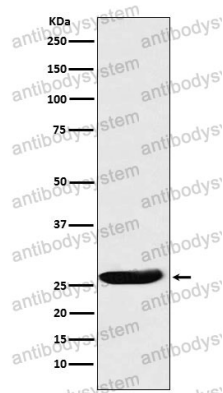
Summary

Catalog No.	RHH36002
Clone ID	R2H46
Host species	Rabbit
Tested applications	IHC: 1:100-1:200, IP: 1:20-1:50, WB: 1:1000-1:2000
Species reactivity	Human, Mouse, Rat
Form	Liquid
Storage buffer	0.01M PBS, pH 7.4, 0.05% BSA, 50% Glycerol, 0.05% Sodium azide.
Concentration	1 mg/ml
Purity	>95% by SDS-PAGE.
Clonality	Monoclonal
Isotype	IgG
Applications	IHC, IP, WB
Target	Endopeptidase Clp, ATP-dependent Clp protease proteolytic subunit, mitochondrial, CLPP
Purification	Protein A/G purified from cell culture supernatant.
Endotoxin level	Please contact with the lab for this information.
Accession	Q16740
Stability and Storage	Use a manual defrost freezer and avoid repeated freeze thaw cycles. Store at 4 °C for frequent use. Store at -20 °C for twelve months from the date of receipt.

Note

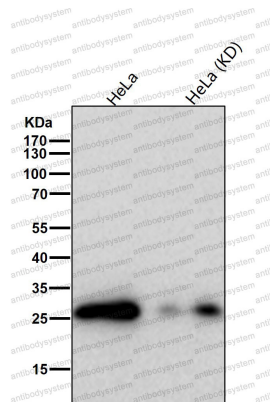
For research use only.

Data Image



Western blot

Western blot analysis of CLPP expression in A431 cell lysate.



Western blot

All lanes use the Antibody at 1:1K dilution for 1 hour at room temperature.