

Anti-SMN1 Antibody (R2H30)

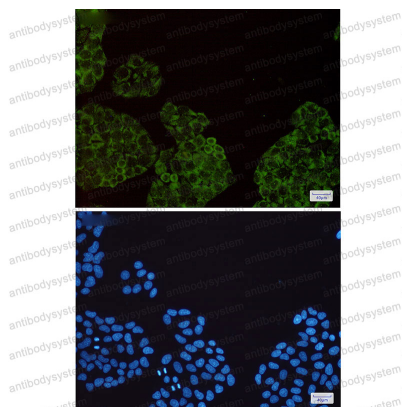
Summary

Catalog No.	RHH32805
Clone ID	R2H30
Host species	Rabbit
Tested applications	IF: 1:50-1:200, WB: 1:500-1:1000
Species reactivity	Human
Form	Liquid
Storage buffer	0.01M PBS, pH 7.4, 0.05% BSA, 50% Glycerol, 0.05% Sodium azide.
Concentration	1 mg/ml
Purity	>95% by SDS-PAGE.
Clonality	Monoclonal
Isotype	IgG
Applications	IF, WB
Target	SMNC, Survival motor neuron protein, SMNT, Component of gems 1, SMN1, SMN, Gemin-1
Purification	Protein A/G purified from cell culture supernatant.
Endotoxin level	Please contact with the lab for this information.
Accession	Q16637
Stability and Storage	Use a manual defrost freezer and avoid repeated freeze thaw cycles. Store at 4 °C for frequent use. Store at -20 °C for twelve months from the date of receipt.

Note

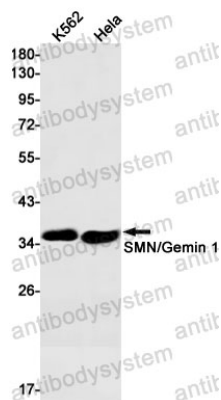
For research use only.

Data Image



Immunofluorescence

Immunocytochemistry analysis of Gemin 1(green) in Hela using Gemin 1 antibody,and DAPI(blue)



Western blot

Western blot analysis of SMN/Gemin 1 in K562, Hela lysates using SMN antibody.