

Anti-CPSF6 Antibody (R2H26)

Summary

Catalog No.	RHH32501
Clone ID	R2H26
Host species	Rabbit
Tested applications	IF: 1:50-1:200, IHC: 1:50-1:100, IP: 1:20, WB: 1:500-1:1000
Species reactivity	Human, Mouse, Rat
Form	Liquid
Storage buffer	0.01M PBS, pH 7.4, 0.05% BSA, 50% Glycerol, 0.05% Sodium azide.
Concentration	1 mg/ml
Purity	>95% by SDS-PAGE.
Clonality	Monoclonal
Isotype	IgG
Applications	IF, IHC, IP, WB
Target	Pre-mRNA cleavage factor Im 68 kDa subunit, CFIM68, Protein HPBRII-4/7, Cleavage and polyadenylation specificity factor subunit 6, CPSF6, CFIm68, CPSF 68 kDa subunit, Cleavage and polyadenylation specificity factor 68 kDa subunit, Cleavage factor Im complex 68 kDa subunit
Purification	Protein A/G purified from cell culture supernatant.
Endotoxin level	Please contact with the lab for this information.
Accession	Q16630

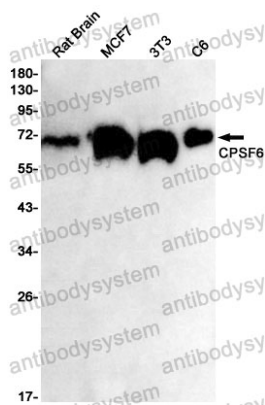
Stability and Storage

Use a manual defrost freezer and avoid repeated freeze thaw cycles. Store at 4 °C for frequent use. Store at -20 °C for twelve months from the date of receipt.

Note

For research use only.

Data Image



Western blot

Western blot analysis of CPSF6 in rat Brain, MCF-7, 3T3, C6 lysates using CPSF6 antibody.