

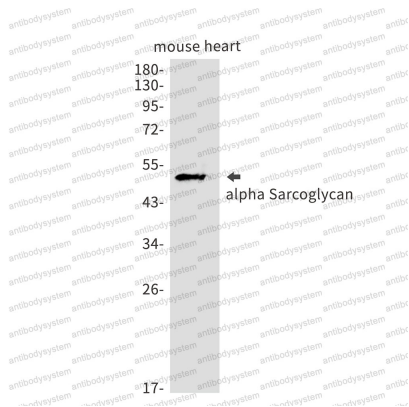
Anti-SGCA Antibody (R2H14)

Summary

Catalog No.	RHH30401
Clone ID	R2H14
Host species	Rabbit
Tested applications	IHC: 1:50-1:100, IP: 1:20, WB: 1:500-1:1000
Species reactivity	Human, Mouse, Rat
Form	Liquid
Storage buffer	0.01M PBS, pH 7.4, 0.05% BSA, 50% Glycerol, 0.05% Sodium azide.
Concentration	1 mg/ml
Purity	>95% by SDS-PAGE.
Clonality	Monoclonal
Isotype	IgG
Applications	IHC, IP, WB
Target	ADL, 50DAG, 50 kDa dystrophin-associated glycoprotein, SGCA, Alpha-sarcoglycan, DAG2, Dystroglycan-2, Adhalin, Alpha-SG
Purification	Protein A/G purified from cell culture supernatant.
Endotoxin level	Please contact with the lab for this information.
Accession	Q16586
Stability and Storage	Use a manual defrost freezer and avoid repeated freeze thaw cycles. Store at 4 °C for frequent use. Store at -20 °C for twelve months from the date of receipt.

Note

For research use only.

Data Image**Western blot**

Western blot analysis of alpha Sarcoglycan in mouse heart lysates using alpha Sarcoglycan antibody.