

# Anti-SGCA Antibody (R2H13)

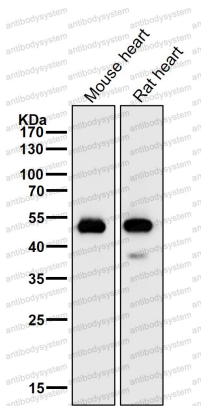
## Summary

---

|                              |   |
|------------------------------|---|
| <b>Catalog No.</b>           | RHH30402  |
| <b>Clone ID</b>              | R2H13   |
| <b>Host species</b>          | Rabbit  |
| <b>Tested applications</b>   | IHC: 1:100-1:200, IP: 1:20-1:50, WB: 1:1000-1:2000  |
| <b>Species reactivity</b>    | Human, Mouse, Rat   |
| <b>Form</b>                  | Liquid  |
| <b>Storage buffer</b>        | 0.01M PBS, pH 7.4, 0.05% BSA, 50% Glycerol, 0.05% Sodium azide.   |
| <b>Concentration</b>         | 1 mg/ml   |
| <b>Purity</b>                | >95% by SDS-PAGE.   |
| <b>Clonality</b>             | Monoclonal  |
| <b>Isotype</b>               | IgG   |
| <b>Applications</b>          | IHC, IP, WB   |
| <b>Target</b>                | ADL, 50DAG, 50 kDa dystrophin-associated glycoprotein, SGCA, Alpha-sarcoglycan, DAG2, Dystroglycan-2, Adhalin, Alpha-SG   |
| <b>Purification</b>          | Protein A/G purified from cell culture supernatant.   |
| <b>Endotoxin level</b>       | Please contact with the lab for this information.   |
| <b>Accession</b>             | Q16586  |
| <b>Stability and Storage</b> | Use a manual defrost freezer and avoid repeated freeze thaw cycles. Store at 4 °C for frequent use. Store at -20 °C for twelve months from the date of receipt. |

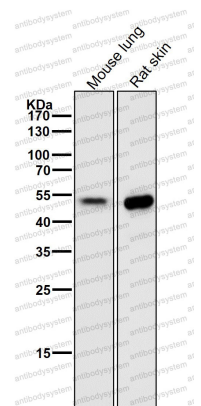
Note For research use only.

## Data Image



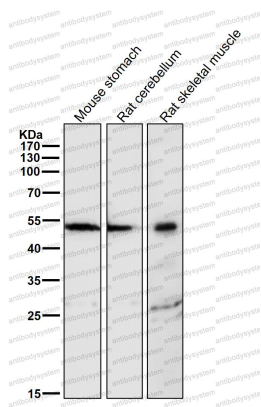
Western blot

All lanes use the Antibody at 1:2K dilution for 1 hour at room temperature.



Western blot

All lanes use the Antibody at 1:2K dilution for 1 hour at room temperature.



Western blot

All lanes use the Antibody at 1:2K dilution for 1 hour at room temperature.