

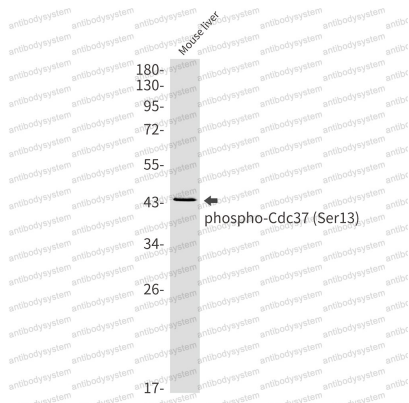
Anti-Phospho-CDC37 (Ser13) Antibody (R2H03)

Summary

Catalog No.	RHH28502
Clone ID	R2H03
Host species	Rabbit
Tested applications	IP: 1:20, WB: 1:500-1:1000
Species reactivity	Human, Mouse, Rat
Form	Liquid
Storage buffer	0.01M PBS, pH 7.4, 0.05% BSA, 50% Glycerol, 0.05% Sodium azide.
Concentration	1 mg/ml
Purity	>95% by SDS-PAGE.
Clonality	Monoclonal
Isotype	IgG
Applications	IP, WB
Target	CDC37, Hsp90 co-chaperone Cdc37, Hsp90 chaperone protein kinase-targeting subunit, p50Cdc37, CDC37A
Purification	Protein A/G purified from cell culture supernatant.
Endotoxin level	Please contact with the lab for this information.
Accession	Q16543
Stability and Storage	Use a manual defrost freezer and avoid repeated freeze thaw cycles. Store at 4 °C for frequent use. Store at -20 °C for twelve months from the date of receipt.

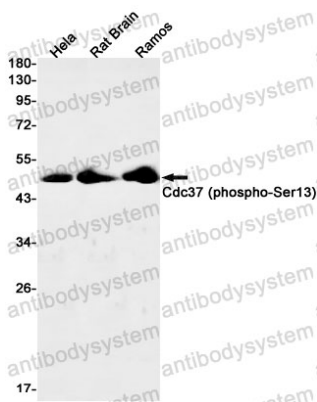
Note For research use only.

Data Image



Western blot

Western blot analysis of Phospho-Cdc37 (Ser13) in mouse liver lysates using Phospho-CDC37 (Ser13) antibody.



Western blot

Western blot analysis of Cdc37 (Phospho-Ser13) in Hela, rat Brain, Ramos lysates using Cdc37 (Phospho-Ser13) antibody.