

Anti-MAPK14/p38 Antibody (R2H02)

Summary

| | |
|----------------------------|--|
| Catalog No. | RHH28303 |
| Clone ID | R2H02 |
| Host species | Rabbit |
| Tested applications | IP: 1:20, WB: 1:500-1:1000 |
| Species reactivity | Human |
| Form | Liquid |
| Storage buffer | 0.01M PBS, pH 7.4, 0.05% BSA, 50% Glycerol, 0.05% Sodium azide. |
| Concentration | 1 mg/ml |
| Purity | >95% by SDS-PAGE. |
| Clonality | Monoclonal |
| Isotype | IgG |
| Applications | IP, WB |
| Target | Stress-activated protein kinase 2a, Mitogen-activated protein kinase 14, Mitogen-activated protein kinase p38 alpha, SAPK2A, Cytokine suppressive anti-inflammatory drug-binding protein, CSBP, CSPB1, MAP kinase 14, MAP kinase MXI2, MAPK14, CSBP2, MAP kinase p38 alpha, MAPK 14, MXI2, CSAID-binding protein, MAX-interacting protein 2, CSBP1, SAPK2a |
| Purification | Protein A/G purified from cell culture supernatant. |
| Endotoxin level | Please contact with the lab for this information. |
| Accession | Q16539 |

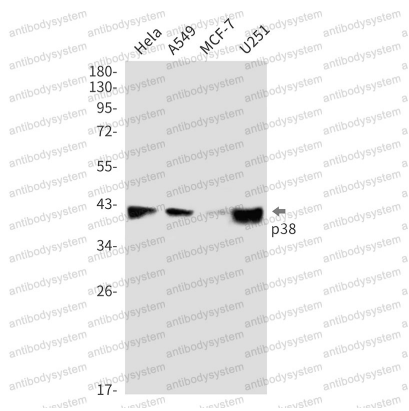
Recombinant Proteins & Antibodies

Stability and Storage

Use a manual defrost freezer and avoid repeated freeze thaw cycles. Store at 4 °C for frequent use. Store at -20 °C for twelve months from the date of receipt.

Note

For research use only.

Data Image

Western blot

Western blot analysis of p38 in HeLa, A549, MCF-7, U251 lysates using p38 antibody.