

# Anti-Phospho-MAPK14/p38 (Thr180) Antibody (R2G99)

## Summary

---

<b>Catalog No.</b>	RHH28302
<b>Clone ID</b>	R2G99
<b>Host species</b>	Rabbit
<b>Tested applications</b>	WB: 1:500-1:1000
<b>Species reactivity</b>	Human, Mouse
<b>Form</b>	Liquid
<b>Storage buffer</b>	0.01M PBS, pH 7.4, 0.05% BSA, 50% Glycerol, 0.05% Sodium azide.
<b>Concentration</b>	1 mg/ml
<b>Purity</b>	>95% by SDS-PAGE.
<b>Clonality</b>	Monoclonal
<b>Isotype</b>	IgG
<b>Applications</b>	WB
<b>Target</b>	Stress-activated protein kinase 2a, Mitogen-activated protein kinase 14, Mitogen-activated protein kinase p38 alpha, SAPK2A, Cytokine suppressive anti-inflammatory drug-binding protein, CSBP, CSPB1, MAP kinase 14, MAP kinase MXI2, MAPK14, CSBP2, MAP kinase p38 alpha, MAPK 14, MXI2, CSAID-binding protein, MAX-interacting protein 2, CSBP1, SAPK2a
<b>Purification</b>	Protein A/G purified from cell culture supernatant.

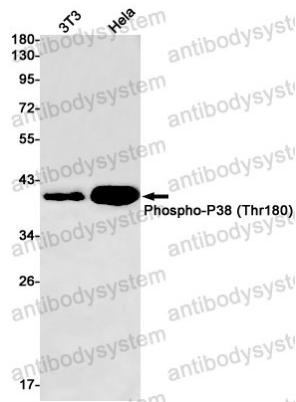
---

Recombinant Proteins & Antibodies

<b>Endotoxin level</b>	Please contact with the lab for this information.
<b>Accession</b>	Q16539
<b>Stability and Storage</b>	Use a manual defrost freezer and avoid repeated freeze thaw cycles. Store at 4 °C for frequent use. Store at -20 °C for twelve months from the date of receipt.
<b>Note</b>	For research use only.

## Data Image

---



Western blot

Western blot analysis of Phospho-P38 (Thr180) in 3T3, Hela lysates using Phospho-p38 (Thr180) antibody.