

Anti-PPP2R5E Antibody (R2G98)

Summary

Catalog No.	RHH28101
Clone ID	R2G98
Host species	Rabbit
Tested applications	IF: 1:50-1:200, IHC: 1:50-1:100, IP: 1:20, WB: 1:500-1:1000
Species reactivity	Human, Mouse, Rat
Form	Liquid
Storage buffer	0.01M PBS, pH 7.4, 0.05% BSA, 50% Glycerol, 0.05% Sodium azide.
Concentration	1 mg/ml
Purity	>95% by SDS-PAGE.
Clonality	Monoclonal
Isotype	IgG
Applications	IF, IHC, IP, WB
Target	Serine/threonine-protein phosphatase 2A 56 kDa regulatory subunit epsilon isoform, PP2A B subunit isoform PR61-epsilon, PPP2R5E, PP2A B subunit isoform R5-epsilon, PP2A B subunit isoform B56-epsilon, PP2A B subunit isoform B'-epsilon
Purification	Protein A/G purified from cell culture supernatant.
Endotoxin level	Please contact with the lab for this information.
Accession	Q16537

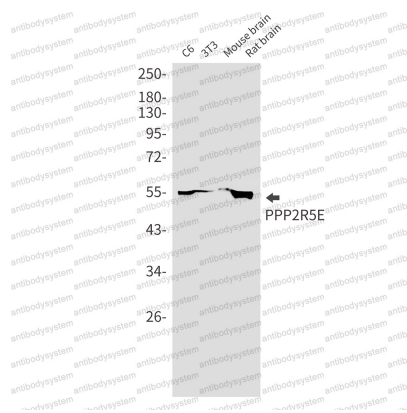
Stability and Storage

Use a manual defrost freezer and avoid repeated freeze thaw cycles. Store at 4 °C for frequent use. Store at -20 °C for twelve months from the date of receipt.

Note

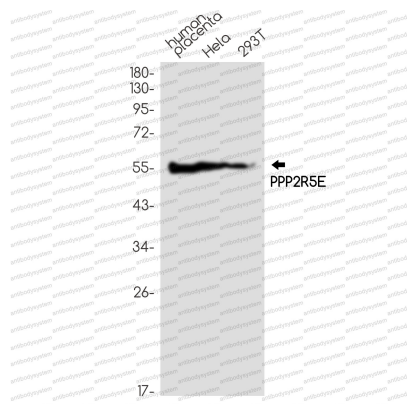
For research use only.

Data Image



Western blot

Western blot analysis of PPP2R5E in C6, 3T3, mouse brain, rat brain lysates using PPP2R5E antibody.



Western blot

Western blot analysis of PPP2R5E in Human placenta, Hela, 293T lysates using PPP2R5E antibody.