

# Anti-Phospho-NFE2L2/Nrf2 (Ser40) Antibody (R2G84)

## Summary

---

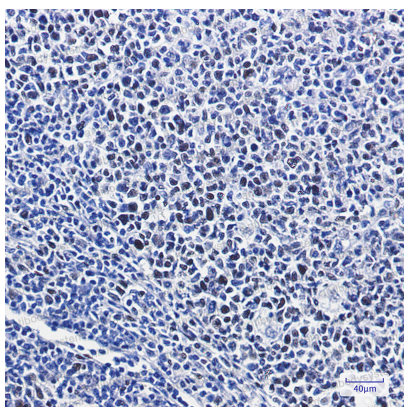
<b>Catalog No.</b>	RHH25001
<b>Clone ID</b>	R2G84
<b>Host species</b>	Rabbit
<b>Tested applications</b>	IHC: 1:50-1:100, WB: 1:500-1:1000
<b>Species reactivity</b>	Human
<b>Form</b>	Liquid
<b>Storage buffer</b>	0.01M PBS, pH 7.4, 0.05% BSA, 50% Glycerol, 0.05% Sodium azide.
<b>Concentration</b>	1 mg/ml
<b>Purity</b>	>95% by SDS-PAGE.
<b>Clonality</b>	Monoclonal
<b>Isotype</b>	IgG
<b>Applications</b>	IHC, WB
<b>Target</b>	NFE2-related factor 2, Nuclear factor, erythroid derived 2, like 2, NRF2, Nuclear factor erythroid 2-related factor 2, NFE2L2, Nrf-2, HEBP1, NF-E2- related factor 2
<b>Purification</b>	Protein A/G purified from cell culture supernatant.
<b>Endotoxin level</b>	Please contact with the lab for this information.
<b>Accession</b>	Q16236

**Stability and Storage**

Use a manual defrost freezer and avoid repeated freeze thaw cycles. Store at 4 °C for frequent use. Store at -20 °C for twelve months from the date of receipt.

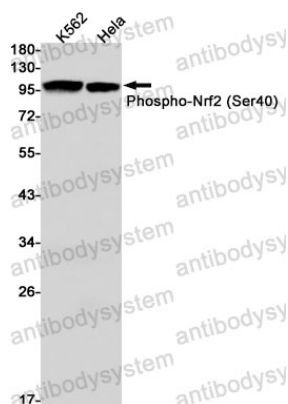
**Note**

For research use only.

**Data Image**

Immunohistochemical

Immunohistochemistry analysis of paraffin-embedded Human tonsil using Nrf2 (Phospho- S40) antibody. High-pressure and temperature Sodium Citrate pH 6.0 was used for antigen retrieval.



Western blot

Western blot analysis of Phospho-Nrf2 (Ser40) in K562, HeLa lysates using Phospho-Nrf2 (Ser40) antibody.