

Anti-ADRM1 Antibody (R2G82)

Summary

Catalog No.	RHH24601
Clone ID	R2G82
Host species	Rabbit
Tested applications	IF: 1:50-1:200, IHC: 1:50-1:100, IP: 1:20, WB: 1:500-1:1000
Species reactivity	Human
Form	Liquid
Storage buffer	0.01M PBS, pH 7.4, 0.05% BSA, 50% Glycerol, 0.05% Sodium azide.
Concentration	1 mg/ml
Purity	>95% by SDS-PAGE.
Clonality	Monoclonal
Isotype	IgG
Applications	IF, IHC, IP, WB
Target	Adhesion-regulating molecule 1, ADRM1, GP110, Rpn13 homolog, 110 kDa cell membrane glycoprotein, hRpn13, Gp110, Proteasome regulatory particle non-ATPase 13, ARM-1, Proteasomal ubiquitin receptor ADRM1
Purification	Protein A/G purified from cell culture supernatant.
Endotoxin level	Please contact with the lab for this information.
Accession	Q16186

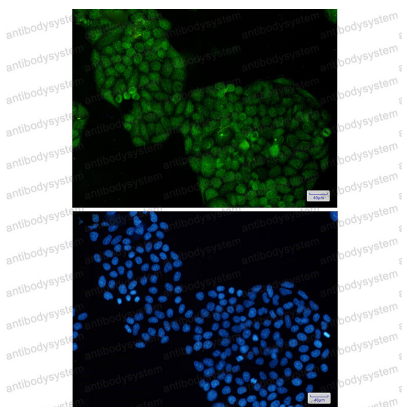
Stability and Storage

Use a manual defrost freezer and avoid repeated freeze thaw cycles. Store at 4 °C for frequent use. Store at -20 °C for twelve months from the date of receipt.

Note

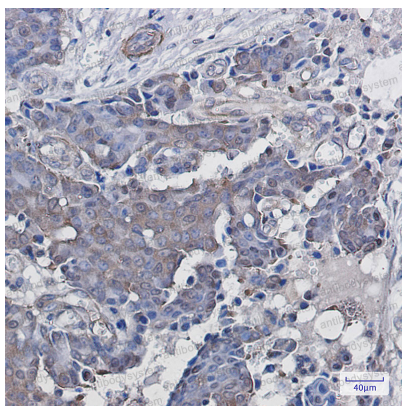
For research use only.

Data Image



Immunofluorescence

Immunocytochemistry analysis of ADRM1(green) in Hela using ADRM1 antibody, and DAPI(blue)



Immunohistochemical

Immunohistochemistry analysis of paraffin-embedded Human breast cancer using ADRM1 antibody. High-pressure and temperature Sodium Citrate pH 6.0 was used for antigen retrieval.



Western blot

Western blot analysis of ADRM1 in K562, HeLa lysates using ADRM1 antibody.