

Anti-ZIC1 Antibody (R2G78)

Summary

Catalog No.	RHH23101
Clone ID	R2G78
Host species	Rabbit
Tested applications	FCM: 1:20-1:100, IF: 1:50-1:200, WB: 1:1000-1:2000
Species reactivity	Human, Mouse, Rat
Form	Liquid
Storage buffer	0.01M PBS, pH 7.4, 0.05% BSA, 50% Glycerol, 0.05% Sodium azide.
Concentration	1 mg/ml
Purity	>95% by SDS-PAGE.
Clonality	Monoclonal
Isotype	IgG
Applications	FCM, IF, WB
Target	ZNF201, Zinc finger protein of the cerebellum 1, Zinc finger protein 201, Zinc finger protein ZIC 1, ZIC1, ZIC
Purification	Protein A/G purified from cell culture supernatant.
Endotoxin level	Please contact with the lab for this information.
Accession	Q15915
Stability and Storage	Use a manual defrost freezer and avoid repeated freeze thaw cycles. Store at 4 °C for frequent use. Store at -20 °C for twelve months from the date of receipt.

Note

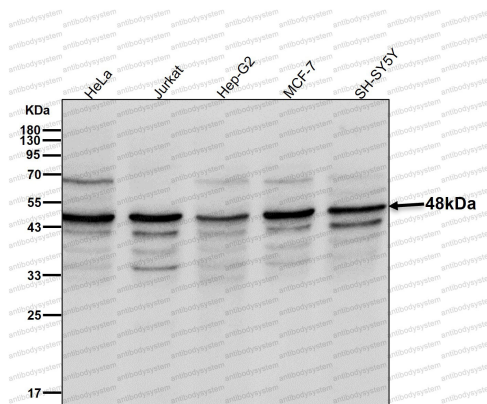
For research use only.

Data Image



Western blot

Western blot analysis of Zic1 expression in SW480 cell lysate.



Western blot

All lanes use the Antibody at 1:1K dilution for 1 hour at room temperature.