

Anti-Phospho-SMAD1 (Ser463/Ser465) Antibody (R2G70)

Summary

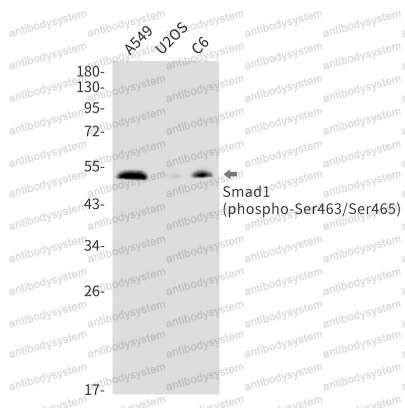
Catalog No.	RHH20101
Clone ID	R2G70
Host species	Rabbit
Tested applications	IP: 1:20, WB: 1:500-1:1000
Species reactivity	Human, Rat
Form	Liquid
Storage buffer	0.01M PBS, pH 7.4, 0.05% BSA, 50% Glycerol, 0.05% Sodium azide.
Concentration	1 mg/ml
Purity	>95% by SDS-PAGE.
Clonality	Monoclonal
Isotype	IgG
Applications	IP, WB
Target	BSP1, Mothers against DPP homolog 1, Mothers against decapentaplegic homolog 1, SMAD1, Transforming growth factor-beta-signaling protein 1, MADH1, JV4-1, MADR1, SMAD family member 1, hSMAD1, SMAD 1, MAD homolog 1, Mad-related protein 1, BSP-1, Smad1
Purification	Protein A/G purified from cell culture supernatant.
Endotoxin level	Please contact with the lab for this information.
Accession	Q15797

Stability and Storage

Use a manual defrost freezer and avoid repeated freeze thaw cycles. Store at 4 °C for frequent use. Store at -20 °C for twelve months from the date of receipt.

Note

For research use only.

Data Image

Western blot

Western blot analysis of Phospho-Smad1 (Ser463/Ser465) in A549, U2OS, C6 lysates using Phospho-Smad1 (Ser463/Ser465) antibody.