

Anti-Phospho-SMAD2 (Ser250) Antibody (R2G68)

Summary

Catalog No.	RHH20009
Clone ID	R2G68
Host species	Rabbit
Tested applications	WB: 1:500-1:1000
Species reactivity	Human, Mouse, Rat, Hamster
Form	Liquid
Storage buffer	0.01M PBS, pH 7.4, 0.05% BSA, 50% Glycerol, 0.05% Sodium azide.
Concentration	1 mg/ml
Purity	>95% by SDS-PAGE.
Clonality	Monoclonal
Isotype	IgG
Applications	WB
Target	Mothers against decapentaplegic homolog 2, SMAD 2, SMAD2, JV18-1, Mad-related protein 2, hMAD-2, MADR2, Mothers against DPP homolog 2, SMAD family member 2, MADH2, Smad2, hSMAD2, MAD homolog 2
Purification	Protein A/G purified from cell culture supernatant.
Endotoxin level	Please contact with the lab for this information.
Accession	Q15796

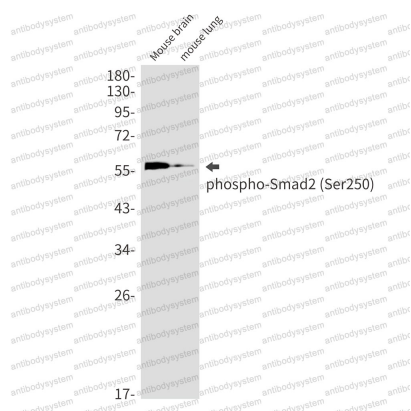
Stability and Storage

Use a manual defrost freezer and avoid repeated freeze thaw cycles. Store at 4 °C for frequent use. Store at -20 °C for twelve months from the date of receipt.

Note

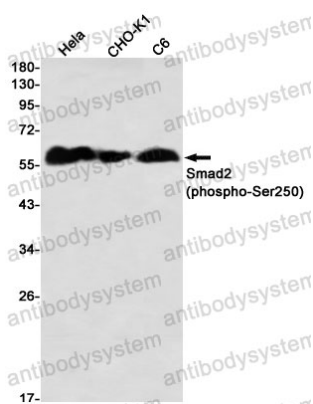
For research use only.

Data Image



Western blot

Western blot analysis of Phospho-Smad2 (Ser250) in mouse brain, mouse lung lysates using Phospho-Smad2 (Ser250) antibody.



Western blot

Western blot analysis of Smad2 (Phospho-Ser250) in HeLa, CHO-K1, C6 lysates using Smad2 (Phospho-Ser250) antibody.