

Anti-TEAD4 Antibody (R2G42)

Summary

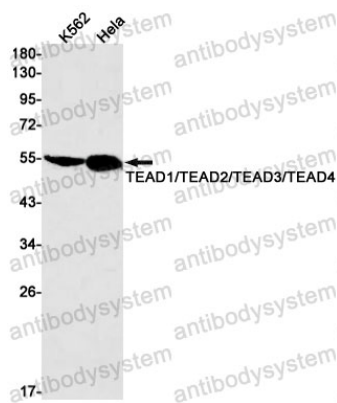
Catalog No.	RHH12901
Clone ID	R2G42
Host species	Rabbit
Tested applications	WB: 1:500-1:1000
Species reactivity	Human
Form	Liquid
Storage buffer	0.01M PBS, pH 7.4, 0.05% BSA, 50% Glycerol, 0.05% Sodium azide.
Concentration	1 mg/ml
Purity	>95% by SDS-PAGE.
Clonality	Monoclonal
Isotype	IgG
Applications	WB
Target	TEAD4, Transcriptional enhancer factor TEF-3, TCF13L1, RTEF1, TEAD-4, Transcription factor 13-like 1, TEF3, Transcription factor RTEF-1, TEA domain family member 4
Purification	Protein A/G purified from cell culture supernatant.
Endotoxin level	Please contact with the lab for this information.
Accession	Q15561

Stability and Storage

Use a manual defrost freezer and avoid repeated freeze thaw cycles. Store at 4 °C for frequent use. Store at -20 °C for twelve months from the date of receipt.

Note

For research use only.

Data Image

Western blot

Western blot analysis of TEAD1/TEAD2/TEAD3/TEAD4 in K562, HeLa lysates using Transcriptional Enhancer Factor TEF antibody.