

Anti-RPS6KA1 Antibody (R2G37)

Summary

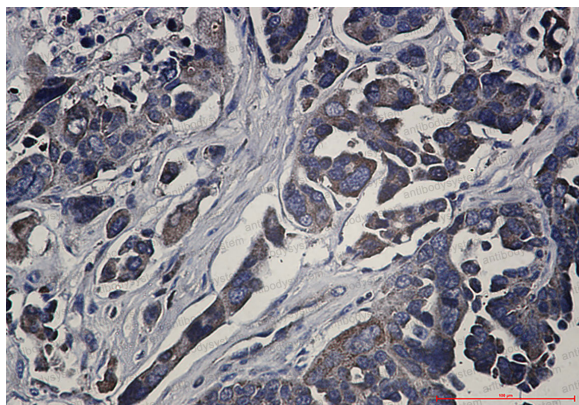
Catalog No.	RHH09501
Clone ID	R2G37
Host species	Rabbit
Tested applications	IHC: 1:50-1:100, IP: 1:20, WB: 1:500-1:1000
Species reactivity	Human
Form	Liquid
Storage buffer	0.01M PBS, pH 7.4, 0.05% BSA, 50% Glycerol, 0.05% Sodium azide.
Concentration	1 mg/ml
Purity	>95% by SDS-PAGE.
Clonality	Monoclonal
Isotype	IgG
Applications	IHC, IP, WB
Target	p90-RSK 1, Ribosomal S6 kinase 1, RSK1, p90RSK1, RPS6KA1, MAPKAP kinase 1a, MAPK-activated protein kinase 1a, RSK-1, MAPKAPK1A, MAP kinase-activated protein kinase 1a, MAPKAPK-1a, S6K-alpha-1, 90 kDa ribosomal protein S6 kinase 1, Ribosomal protein S6 kinase alpha-1, p90S6K
Purification	Protein A/G purified from cell culture supernatant.
Endotoxin level	Please contact with the lab for this information.
Accession	Q15418

Stability and Storage

Use a manual defrost freezer and avoid repeated freeze thaw cycles. Store at 4 °C for frequent use. Store at -20 °C for twelve months from the date of receipt.

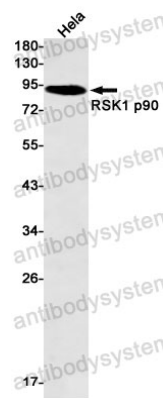
Note

For research use only.

Data Image

Immunohistochemical

Immunohistochemistry analysis of paraffin-embedded Human Cholangiocarcinoma using RSK1 p90 antibody. High-pressure and temperature Sodium Citrate pH 6.0 was used for antigen retrieval.



Western blot

Western blot analysis of RSK1 p90 in HeLa lysates using RSK1 p90 antibody.