

Anti-Phospho-RPS6KA1/RSK1 p90 (Ser380) Antibody (R2G36)

Summary

| | |
|----------------------------|--|
| Catalog No. | RHH09502 |
| Clone ID | R2G36 |
| Host species | Rabbit |
| Tested applications | IP: 1:20, WB: 1:500-1:1000 |
| Species reactivity | Mouse, Hamster |
| Form | Liquid |
| Storage buffer | 0.01M PBS, pH 7.4, 0.05% BSA, 50% Glycerol, 0.05% Sodium azide. |
| Concentration | 1 mg/ml |
| Purity | >95% by SDS-PAGE. |
| Clonality | Monoclonal |
| Isotype | IgG |
| Applications | IP, WB |
| Target | p90-RSK 1, Ribosomal S6 kinase 1, RSK1, p90RSK1, RPS6KA1, MAPKAP kinase 1a, MAPK-activated protein kinase 1a, RSK-1, MAPKAPK1A, MAP kinase-activated protein kinase 1a, MAPKAPK-1a, S6K-alpha-1, 90 kDa ribosomal protein S6 kinase 1, Ribosomal protein S6 kinase alpha-1, p90S6K |
| Purification | Protein A/G purified from cell culture supernatant. |
| Endotoxin level | Please contact with the lab for this information. |

Recombinant Proteins & Antibodies

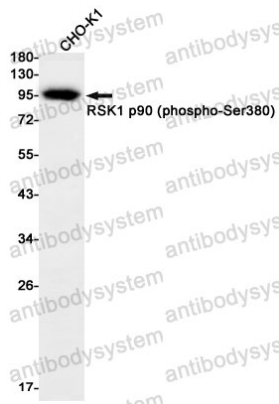
Accession Q15418**Stability and Storage**

Use a manual defrost freezer and avoid repeated freeze thaw cycles. Store at 4 °C for frequent use. Store at -20 °C for twelve months from the date of receipt.

Note

For research use only.

Data Image



Western blot

Western blot analysis of RSK1 p90 (Phospho-Ser380) in CHO-K1 lysates using Phospho-RSK1 p90 (Ser380) antibody.