

Anti-Phospho-RPS6KA1 (Thr359/Ser363) Antibody (R2G35)

Summary

Catalog No.	RHH09503
Clone ID	R2G35
Host species	Rabbit
Tested applications	IP: 1:20, WB: 1:500-1:1000
Species reactivity	Human, Mouse, Rat
Form	Liquid
Storage buffer	0.01M PBS, pH 7.4, 0.05% BSA, 50% Glycerol, 0.05% Sodium azide.
Concentration	1 mg/ml
Purity	>95% by SDS-PAGE.
Clonality	Monoclonal
Isotype	IgG
Applications	IP, WB
Target	p90-RSK 1, Ribosomal S6 kinase 1, RSK1, p90RSK1, RPS6KA1, MAPKAP kinase 1a, MAPK-activated protein kinase 1a, RSK-1, MAPKAPK1A, MAP kinase-activated protein kinase 1a, MAPKAPK-1a, S6K-alpha-1, 90 kDa ribosomal protein S6 kinase 1, Ribosomal protein S6 kinase alpha-1, p90S6K
Purification	Protein A/G purified from cell culture supernatant.
Endotoxin level	Please contact with the lab for this information.

Accession

Q15418

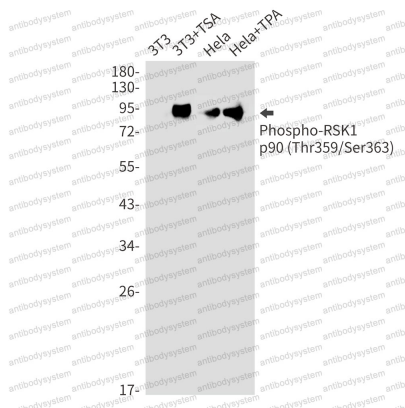
Stability and Storage

Use a manual defrost freezer and avoid repeated freeze thaw cycles. Store at 4 °C for frequent use. Store at -20 °C for twelve months from the date of receipt.

Note

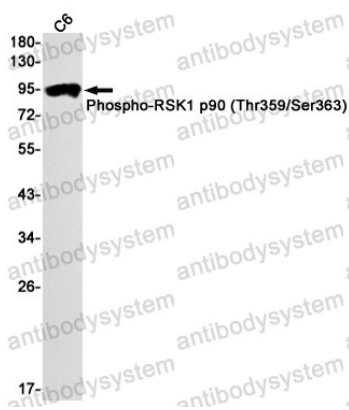
For research use only.

Data Image



Western blot

Western blot analysis of Phospho-RSK1 p90 (Thr359/Ser363) in 3T3, 3T3+TSA, Hela, Hela+TPA lysates using Phospho-RSK1 p90 (Thr359/Ser363) antibody.



Western blot

Western blot analysis of Phospho-RSK1 p90 (Thr359/Ser363) in C6 lysates using Phospho-RSK1 p90 (Thr359/Ser363) antibody.