

Anti-PCBP1 Antibody (R2G26)

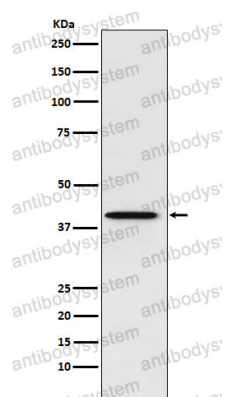
Summary

Catalog No.	RHH07402
Clone ID	R2G26
Host species	Rabbit
Tested applications	IP: 1:20-1:50, WB: 1:1000-1:2000
Species reactivity	Human, Mouse, Rat
Form	Liquid
Storage buffer	0.01M PBS, pH 7.4, 0.05% BSA, 50% Glycerol, 0.05% Sodium azide.
Concentration	1 mg/ml
Purity	>95% by SDS-PAGE.
Clonality	Monoclonal
Isotype	IgG
Applications	IP, WB
Target	PCBP1, Poly(rC)-binding protein 1, Nucleic acid-binding protein SUB2.3, Heterogeneous nuclear ribonucleoprotein E1, Alpha-CP1, hnRNP E1
Purification	Protein A/G purified from cell culture supernatant.
Endotoxin level	Please contact with the lab for this information.
Accession	Q15365
Stability and Storage	Use a manual defrost freezer and avoid repeated freeze thaw cycles. Store at 4 °C for frequent use. Store at -20 °C for twelve months from the date of receipt.

Note

For research use only.

Data Image



Western blot

Western blot analysis of PCBP1 expression in HeLa cell lysate.