

Anti-RPS6KA2 Antibody (R2G25)

Summary

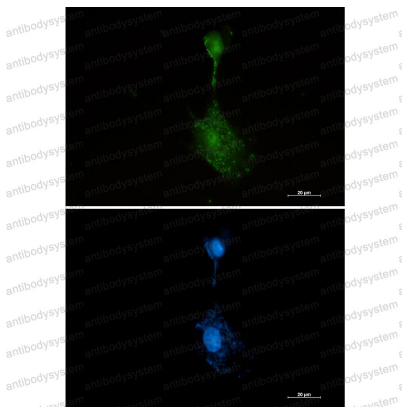
| | |
|----------------------------|--|
| Catalog No. | RHH07101 |
| Clone ID | R2G25 |
| Host species | Rabbit |
| Tested applications | IF: 1:50-1:200, IHC: 1:50-1:100, IP: 1:20, WB: 1:500-1:1000 |
| Species reactivity | Human, Hamster |
| Form | Liquid |
| Storage buffer | 0.01M PBS, pH 7.4, 0.05% BSA, 50% Glycerol, 0.05% Sodium azide. |
| Concentration | 1 mg/ml |
| Purity | >95% by SDS-PAGE. |
| Clonality | Monoclonal |
| Isotype | IgG |
| Applications | IF, IHC, IP, WB |
| Target | MAPKAPK-1c, RPS6KA2, Ribosomal protein S6 kinase alpha-2, 90 kDa ribosomal protein S6 kinase 2, S6K-alpha-2, p90RSK2, pp90RSK3, MAPKAPK1C, MAP kinase-activated protein kinase 1c, p90-RSK 2, RSK3, MAPKAP kinase 1c, RSK-3, Ribosomal S6 kinase 3, MAPK-activated protein kinase 1c |
| Purification | Protein A/G purified from cell culture supernatant. |
| Endotoxin level | Please contact with the lab for this information. |
| Accession | Q15349 |

Stability and Storage

Use a manual defrost freezer and avoid repeated freeze thaw cycles. Store at 4 °C for frequent use. Store at -20 °C for twelve months from the date of receipt.

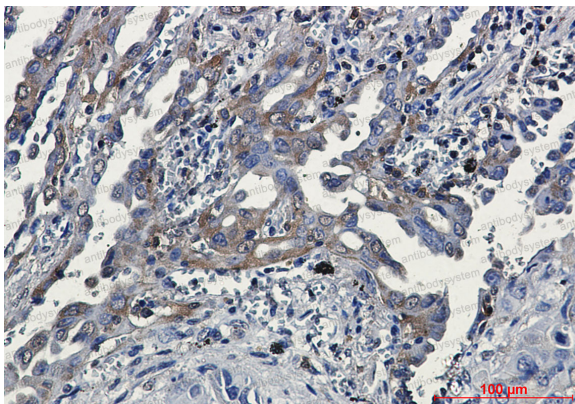
Note

For research use only.

Data Image

Immunofluorescence

Immunocytochemistry analysis of RSK3 (green) in U87-MG using RSK3 antibody, and DAPI (blue).



Immunohistochemical

Immunohistochemistry analysis of paraffin-embedded Human lung cancer tissue using RSK3 antibody. High-pressure and temperature Sodium Citrate pH 6.0 was used for antigen retrieval.



Western blot

Western blot analysis of RSK3 in CHO-K1, HeLa lysates using RSK3 antibody.