

Anti-IRF4 Antibody (R2G22)

Summary

Catalog No.	RHH06201
Clone ID	R2G22
Host species	Rabbit
Tested applications	IP: 1:20, WB: 1:500-1:1000
Species reactivity	Human
Form	Liquid
Storage buffer	0.01M PBS, pH 7.4, 0.05% BSA, 50% Glycerol, 0.05% Sodium azide.
Concentration	1 mg/ml
Purity	>95% by SDS-PAGE.
Clonality	Monoclonal
Isotype	IgG
Applications	IP, WB
Target	IRF-4, NF-EM5, MUM1, LSIRF, IRF4, Multiple myeloma oncogene 1, Interferon regulatory factor 4, Lymphocyte-specific interferon regulatory factor
Purification	Protein A/G purified from cell culture supernatant.
Endotoxin level	Please contact with the lab for this information.
Accession	Q15306

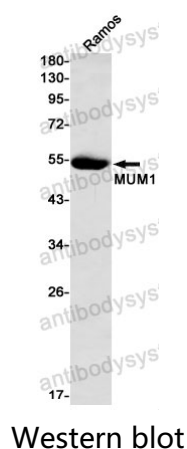
Stability and Storage

Use a manual defrost freezer and avoid repeated freeze thaw cycles. Store at 4 °C for frequent use. Store at -20 °C for twelve months from the date of receipt.

Note

For research use only.

Data Image



Western blot analysis of MUM1 in Ramos lysates using Interferon Regulatory Factor 4 antibody.