

Anti-PTPRR Antibody (R2G17)

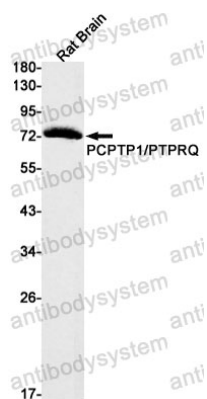
Summary

Catalog No.	RHH04901
Clone ID	R2G17
Host species	Rabbit
Tested applications	WB: 1:500-1:1000
Species reactivity	Rat
Form	Liquid
Storage buffer	0.01M PBS, pH 7.4, 0.05% BSA, 50% Glycerol, 0.05% Sodium azide.
Concentration	1 mg/ml
Purity	>95% by SDS-PAGE.
Clonality	Monoclonal
Isotype	IgG
Applications	WB
Target	R-PTP-R, Receptor-type tyrosine-protein phosphatase R, NC-PTPCOM1, PTPRQ, Ch-1PTPase, PTPRR, Protein-tyrosine phosphatase PCPTP1, ECPTP
Purification	Protein A/G purified from cell culture supernatant.
Endotoxin level	Please contact with the lab for this information.
Accession	Q15256
Stability and Storage	Use a manual defrost freezer and avoid repeated freeze thaw cycles. Store at 4 °C for frequent use. Store at -20 °C for twelve months from the date of receipt.

Note

For research use only.

Data Image



Western blot

Western blot analysis of PCPTP1/PTPRQ in rat Brain lysates using PCPTP1 antibody.