

# Anti-PTGES3/P23 Antibody (R2G13)

## Summary

---

<b>Catalog No.</b>	RHH04201
<b>Clone ID</b>	R2G13
<b>Host species</b>	Rabbit
<b>Tested applications</b>	IF: 1:50-1:200, IP: 1:20, WB: 1:500-1:1000
<b>Species reactivity</b>	Human, Mouse, Rat
<b>Form</b>	Liquid
<b>Storage buffer</b>	0.01M PBS, pH 7.4, 0.05% BSA, 50% Glycerol, 0.05% Sodium azide.
<b>Concentration</b>	1 mg/ml
<b>Purity</b>	>95% by SDS-PAGE.
<b>Clonality</b>	Monoclonal
<b>Isotype</b>	IgG
<b>Applications</b>	IF, IP, WB
<b>Target</b>	PTGES3, Hsp90 co-chaperone, P23, Progesterone receptor complex p23, Prostaglandin E synthase 3, cPGES, Telomerase-binding protein p23, Cytosolic prostaglandin E2 synthase, TEBP
<b>Purification</b>	Protein A/G purified from cell culture supernatant.
<b>Endotoxin level</b>	Please contact with the lab for this information.
<b>Accession</b>	Q15185

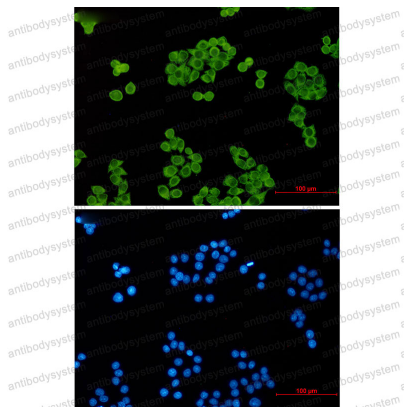
## Recombinant Proteins &amp; Antibodies

**Stability and Storage**

Use a manual defrost freezer and avoid repeated freeze thaw cycles. Store at 4 °C for frequent use. Store at -20 °C for twelve months from the date of receipt.

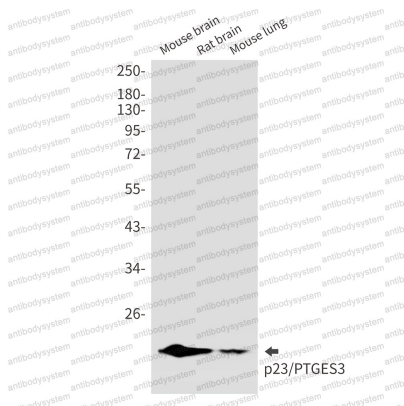
**Note**

For research use only.

**Data Image**

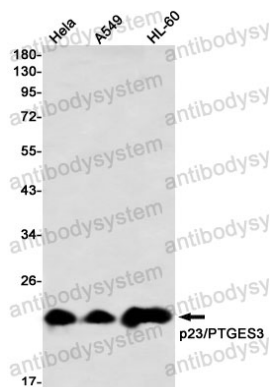
Immunofluorescence

Immunocytochemistry analysis of p23 (green) in Hela using p23 antibody, and DAPI (blue).



Western blot

Western blot analysis of p23/PTGES3 in mouse brain, rat brain, mouse lung lysates using p23/PTGES3 antibody.



Western blot

Western blot analysis of p23/PTGES3 in HeLa, A549, HL-60 lysates using p23/PTGES3 antibody