

Anti-PRKD1 Antibody (R2G07)

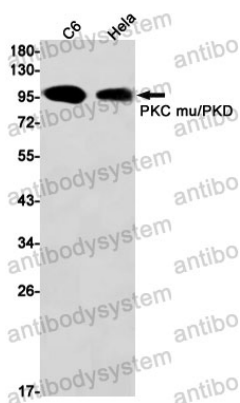
Summary

Catalog No.	RHH03101
Clone ID	R2G07
Host species	Rabbit
Tested applications	WB: 1:500-1:1000
Species reactivity	Human, Rat
Form	Liquid
Storage buffer	0.01M PBS, pH 7.4, 0.05% BSA, 50% Glycerol, 0.05% Sodium azide.
Concentration	1 mg/ml
Purity	>95% by SDS-PAGE.
Clonality	Monoclonal
Isotype	IgG
Applications	WB
Target	PRKD1, Protein kinase D, nPKC-D1, Protein kinase C mu type, PKD1, PKD, nPKC-mu, PRKCM, Serine/threonine-protein kinase D1
Purification	Protein A/G purified from cell culture supernatant.
Endotoxin level	Please contact with the lab for this information.
Accession	Q15139
Stability and Storage	Use a manual defrost freezer and avoid repeated freeze thaw cycles. Store at 4 °C for frequent use. Store at -20 °C for twelve months from the date of receipt.

Note

For research use only.

Data Image



Western blot

Western blot analysis of PKC mu/PKD in C6, HeLa lysates using PKD1 antibody.