

Anti-PRKD1 Antibody (R2G06)

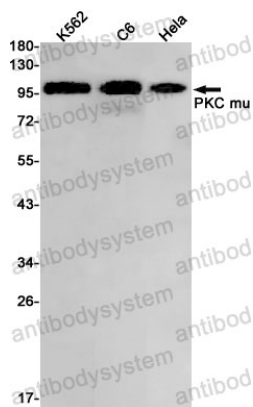
Summary

Catalog No.	RHH03103
Clone ID	R2G06
Host species	Rabbit
Tested applications	WB: 1:500-1:1000
Species reactivity	Human, Rat
Form	Liquid
Storage buffer	0.01M PBS, pH 7.4, 0.05% BSA, 50% Glycerol, 0.05% Sodium azide.
Concentration	1 mg/ml
Purity	>95% by SDS-PAGE.
Clonality	Monoclonal
Isotype	IgG
Applications	WB
Target	PRKD1, Protein kinase D, nPKC-D1, Protein kinase C mu type, PKD1, PKD, nPKC-mu, PRKCM, Serine/threonine-protein kinase D1
Purification	Protein A/G purified from cell culture supernatant.
Endotoxin level	Please contact with the lab for this information.
Accession	Q15139
Stability and Storage	Use a manual defrost freezer and avoid repeated freeze thaw cycles. Store at 4 °C for frequent use. Store at -20 °C for twelve months from the date of receipt.

Note

For research use only.

Data Image



Western blot

Western blot analysis of PKC mu in K562, C6, HeLa lysates using PKD1 antibody.