

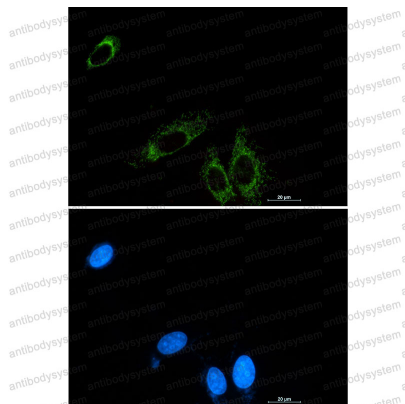
# Anti-P2RY6 Antibody (R2F97)

## Summary

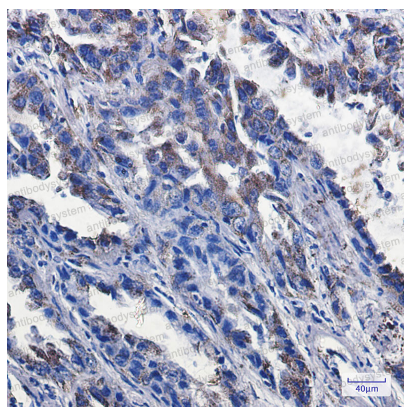
---

<b>Catalog No.</b>	RHH01401
<b>Clone ID</b>	R2F97
<b>Host species</b>	Rabbit
<b>Tested applications</b>	IF: 1:50-1:200, IHC: 1:50-1:100, IP: 1:20, WB: 1:500-1:1000
<b>Species reactivity</b>	Human
<b>Form</b>	Liquid
<b>Storage buffer</b>	0.01M PBS, pH 7.4, 0.05% BSA, 50% Glycerol, 0.05% Sodium azide.
<b>Concentration</b>	1 mg/ml
<b>Purity</b>	>95% by SDS-PAGE.
<b>Clonality</b>	Monoclonal
<b>Isotype</b>	IgG
<b>Applications</b>	IF, IHC, IP, WB
<b>Target</b>	P2RY6, P2Y6, P2Y purinoceptor 6
<b>Purification</b>	Protein A/G purified from cell culture supernatant.
<b>Endotoxin level</b>	Please contact with the lab for this information.
<b>Accession</b>	Q15077
<b>Stability and Storage</b>	Use a manual defrost freezer and avoid repeated freeze thaw cycles. Store at 4 °C for frequent use. Store at -20 °C for twelve months from the date of receipt.
<b>Note</b>	For research use only.

## Data Image



Immunofluorescence



Immunohistochemical



Western blot

Immunocytochemistry analysis of P2Y6 (green) in A549 using P2Y6 antibody, and DAPI (blue).

Immunohistochemistry analysis of paraffin-embedded Human lung cancer tissue using P2Y6 antibody. High-pressure and temperature Sodium Citrate pH 6.0 was used for antigen retrieval.

Western blot analysis of P2Y6 in K562, Hela lysates using P2Y6 antibody.