

Anti-SUZ12 Antibody (R2F88)

Summary

Catalog No.	RHG97901
Clone ID	R2F88
Host species	Rabbit
Tested applications	IP: 1:20, WB: 1:500-1:1000
Species reactivity	Human, Mouse
Form	Liquid
Storage buffer	0.01M PBS, pH 7.4, 0.05% BSA, 50% Glycerol, 0.05% Sodium azide.
Concentration	1 mg/ml
Purity	>95% by SDS-PAGE.
Clonality	Monoclonal
Isotype	IgG
Applications	IP, WB
Target	SUZ12, Polycomb protein SUZ12, Joined to JAZF1 protein, CHET9, KIAA0160, ChET 9 protein, Suppressor of zeste 12 protein homolog, Chromatin precipitated E2F target 9 protein, JAZ1
Purification	Protein A/G purified from cell culture supernatant.
Endotoxin level	Please contact with the lab for this information.
Accession	Q15022

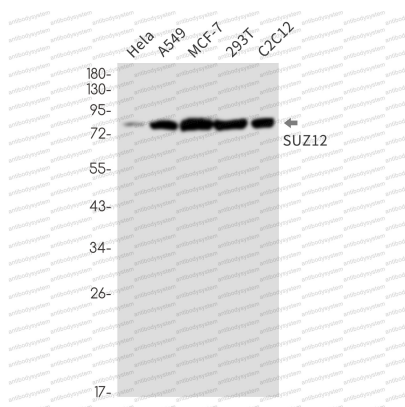
Stability and Storage

Use a manual defrost freezer and avoid repeated freeze thaw cycles. Store at 4 °C for frequent use. Store at -20 °C for twelve months from the date of receipt.

Note

For research use only.

Data Image



Western blot

Western blot analysis of SUZ12 in Hela, A549, MCF-7, 293T, C2C12 lysates using Polycomb Protein SUZ12 antibody.