

Anti-NOLC1 Antibody (R2F82)

Summary

Catalog No.	RHG93701
Clone ID	R2F82
Host species	Rabbit
Tested applications	IF: 1:50-1:200, IHC: 1:50-1:100, WB: 1:500-1:1000
Species reactivity	Human
Form	Liquid
Storage buffer	0.01M PBS, pH 7.4, 0.05% BSA, 50% Glycerol, 0.05% Sodium azide.
Concentration	1 mg/ml
Purity	>95% by SDS-PAGE.
Clonality	Monoclonal
Isotype	IgG
Applications	IF, IHC, WB
Target	Nucleolar phosphoprotein p130, NOLC1, HCV NS5A-transactivated protein 13, 140 kDa nucleolar phosphoprotein, KIAA0035, Hepatitis C virus NS5A-transactivated protein 13, NS5ATP13, Nopp140, Nucleolar and coiled-body phosphoprotein 1, Nucleolar 130 kDa protein
Purification	Protein A/G purified from cell culture supernatant.
Endotoxin level	Please contact with the lab for this information.
Accession	Q14978

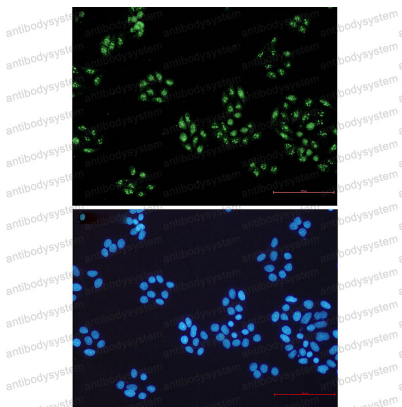
Stability and Storage

Use a manual defrost freezer and avoid repeated freeze thaw cycles. Store at 4 °C for frequent use. Store at -20 °C for twelve months from the date of receipt.

Note

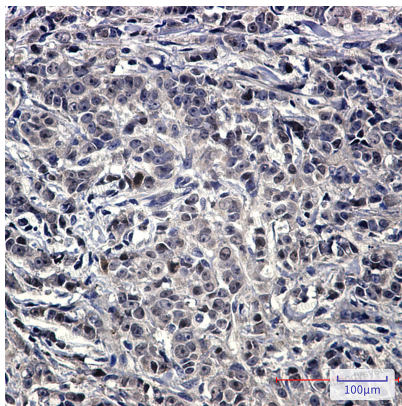
For research use only.

Data Image



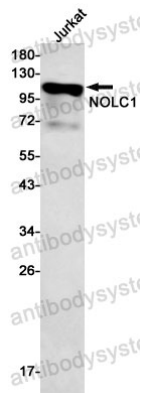
Immunofluorescence

Immunocytochemistry analysis of NOLC1 (green) in Hela using NOLC1 antibody, and DAPI (blue)



Immunohistochemical

Immunohistochemistry analysis of paraffin-embedded Human breast cancer using NOLC1 antibody. High-pressure and temperature Sodium Citrate pH 6.0 was used for antigen retrieval.



Western blot

Western blot analysis of NOLC1 in Jurkat lysates using NOLC1 antibody.