

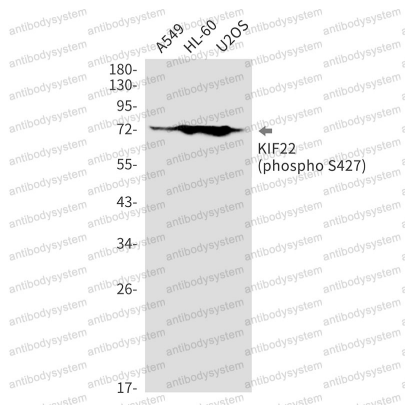
Anti-Phospho-KIF22 (Ser427) Antibody (R2F80)

Summary

Catalog No.	RHG90701
Clone ID	R2F80
Host species	Rabbit
Tested applications	WB: 1:500-1:1000
Species reactivity	Human
Form	Liquid
Storage buffer	0.01M PBS, pH 7.4, 0.05% BSA, 50% Glycerol, 0.05% Sodium azide.
Concentration	1 mg/ml
Purity	>95% by SDS-PAGE.
Clonality	Monoclonal
Isotype	IgG
Applications	WB
Target	Kinesin-like DNA-binding protein, Kinesin-like protein KIF22, Kinesin-like protein 4, KID, KIF22, KNSL4
Purification	Protein A/G purified from cell culture supernatant.
Endotoxin level	Please contact with the lab for this information.
Accession	Q14807
Stability and Storage	Use a manual defrost freezer and avoid repeated freeze thaw cycles. Store at 4 °C for frequent use. Store at -20 °C for twelve months from the date of receipt.

Note

For research use only.

Data Image**Western blot**

Western blot analysis of Phospho-KIF22 (Ser427) in A549, HL-60, U2OS lysates using Phospho-KIF22 (Ser427) antibody.