

Anti-LBR Antibody (R2F74)

Summary

Catalog No.	RHG89002
Clone ID	R2F74
Host species	Rabbit
Tested applications	IHC: 1:50-1:100, IP: 1:20, WB: 1:500-1:1000
Species reactivity	Human
Form	Liquid
Storage buffer	0.01M PBS, pH 7.4, 0.05% BSA, 50% Glycerol, 0.05% Sodium azide.
Concentration	1 mg/ml
Purity	>95% by SDS-PAGE.
Clonality	Monoclonal
Isotype	IgG
Applications	IHC, IP, WB
Target	LMN2R, LBR, C14SR, Integral nuclear envelope inner membrane protein, Sterol C14-reductase, 3-beta-hydroxysterol Delta (14)-reductase, Delta(14)-sterol reductase LBR, Lamin-B receptor, Delta-14-SR, C-14 sterol reductase
Purification	Protein A/G purified from cell culture supernatant.
Endotoxin level	Please contact with the lab for this information.
Accession	Q14739

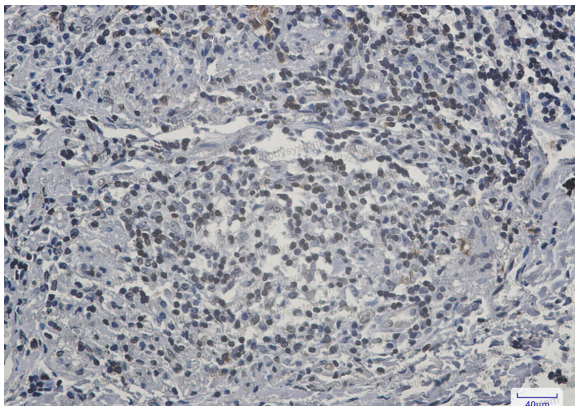
Recombinant Proteins & Antibodies

Stability and Storage

Use a manual defrost freezer and avoid repeated freeze thaw cycles. Store at 4 °C for frequent use. Store at -20 °C for twelve months from the date of receipt.

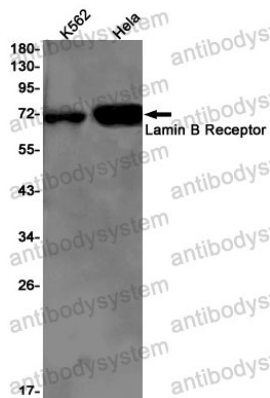
Note

For research use only.

Data Image

Immunohistochemical

Immunohistochemistry analysis of paraffin-embedded Human lung cancer using Lamin B Receptor antibody. High-pressure and temperature Sodium Citrate pH 6.0 was used for antigen retrieval.



Western blot

Western blot analysis of Lamin B Receptor in K562, HeLa lysates using Lamin B Receptor antibody.