

Anti-PPP2R5D Antibody (R2F73)

Summary

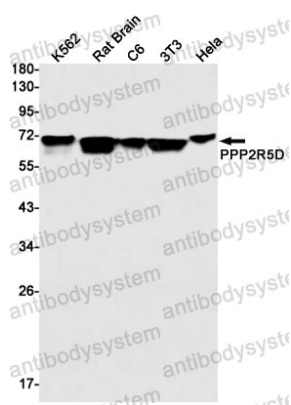
Catalog No.	RHG88901
Clone ID	R2F73
Host species	Rabbit
Tested applications	IP: 1:20, WB: 1:500-1:1000
Species reactivity	Human, Mouse, Rat
Form	Liquid
Storage buffer	0.01M PBS, pH 7.4, 0.05% BSA, 50% Glycerol, 0.05% Sodium azide.
Concentration	1 mg/ml
Purity	>95% by SDS-PAGE.
Clonality	Monoclonal
Isotype	IgG
Applications	IP, WB
Target	PP2A B subunit isoform B'-delta, PP2A B subunit isoform B56-delta, PPP2R5D, PP2A B subunit isoform R5-delta, PP2A B subunit isoform PR61-delta, Serine/threonine-protein phosphatase 2A 56 kDa regulatory subunit delta isoform
Purification	Protein A/G purified from cell culture supernatant.
Endotoxin level	Please contact with the lab for this information.
Accession	Q14738

Stability and Storage

Use a manual defrost freezer and avoid repeated freeze thaw cycles. Store at 4 °C for frequent use. Store at -20 °C for twelve months from the date of receipt.

Note

For research use only.

Data Image

Western blot

Western blot analysis of PPP2R5D in K562, rat Brain, C6, 3T3, HeLa lysates using PPP2R5D antibody.