

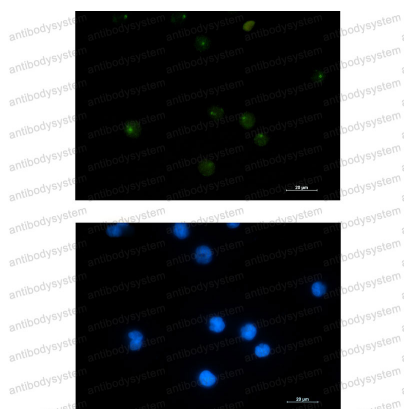
Anti-GINS1 Antibody (R2F68)

Summary

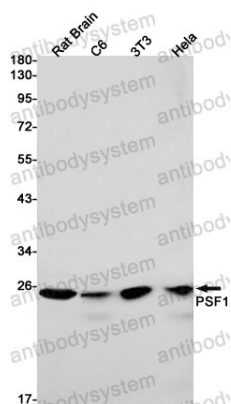
Catalog No.	RHG87601
Clone ID	R2F68
Host species	Rabbit
Tested applications	IF: 1:50-1:200, IP: 1:20, WB: 1:500-1:1000
Species reactivity	Human, Mouse, Rat
Form	Liquid
Storage buffer	0.01M PBS, pH 7.4, 0.05% BSA, 50% Glycerol, 0.05% Sodium azide.
Concentration	1 mg/ml
Purity	>95% by SDS-PAGE.
Clonality	Monoclonal
Isotype	IgG
Applications	IF, IP, WB
Target	KIAA0186, GINS1, PSF1, GINS complex subunit 1, DNA replication complex GINS protein PSF1
Purification	Protein A/G purified from cell culture supernatant.
Endotoxin level	Please contact with the lab for this information.
Accession	Q14691
Stability and Storage	Use a manual defrost freezer and avoid repeated freeze thaw cycles. Store at 4 °C for frequent use. Store at -20 °C for twelve months from the date of receipt.

Note

For research use only.

Data Image**Immunofluorescence**

Immunocytochemistry analysis of PSF1 (green) in Jurkat using PSF1 antibody, and DAPI (blue).

**Western blot**

Western blot analysis of PSF1 in rat Brain, C6, 3T3, HeLa lysates using PSF1 antibody.