

Anti-SMC1A Antibody (R2F67)

Summary

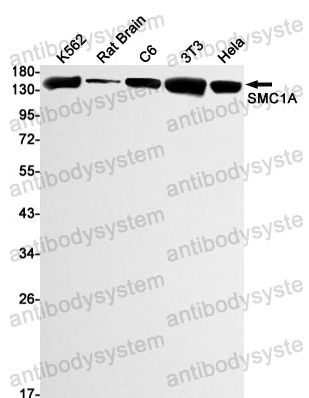
Catalog No.	RHG87002
Clone ID	R2F67
Host species	Rabbit
Tested applications	IP: 1:20, WB: 1:500-1:1000
Species reactivity	Human, Mouse, Rat
Form	Liquid
Storage buffer	0.01M PBS, pH 7.4, 0.05% BSA, 50% Glycerol, 0.05% Sodium azide.
Concentration	1 mg/ml
Purity	>95% by SDS-PAGE.
Clonality	Monoclonal
Isotype	IgG
Applications	IP, WB
Target	DXS423E, SB1.8, KIAA0178, Structural maintenance of chromosomes protein 1A, SMC-1A, Sb1.8, SMC1, SMC1A, SMC protein 1A, SMC1L1, SMC-1-alpha
Purification	Protein A/G purified from cell culture supernatant.
Endotoxin level	Please contact with the lab for this information.
Accession	Q14683

Stability and Storage

Use a manual defrost freezer and avoid repeated freeze thaw cycles. Store at 4 °C for frequent use. Store at -20 °C for twelve months from the date of receipt.

Note

For research use only.

Data Image

Western blot

Western blot analysis of SMC1A in K562, rat Brain, C6, 3T3, HeLa lysates using SMC1A antibody.