

Anti-MELK Antibody (R2F66)

Summary

Catalog No.	RHG86802
Clone ID	R2F66
Host species	Rabbit
Tested applications	WB: 1:500-1:1000
Species reactivity	Human, Rat
Form	Liquid
Storage buffer	0.01M PBS, pH 7.4, 0.05% BSA, 50% Glycerol, 0.05% Sodium azide.
Concentration	1 mg/ml
Purity	>95% by SDS-PAGE.
Clonality	Monoclonal
Isotype	IgG
Applications	WB
Target	Tyrosine-protein kinase MELK, Maternal embryonic leucine zipper kinase, Protein kinase Eg3, hMELK, MELK, Protein kinase PK38, hPK38, pEg3 kinase, KIAA0175
Purification	Protein A/G purified from cell culture supernatant.
Endotoxin level	Please contact with the lab for this information.
Accession	Q14680

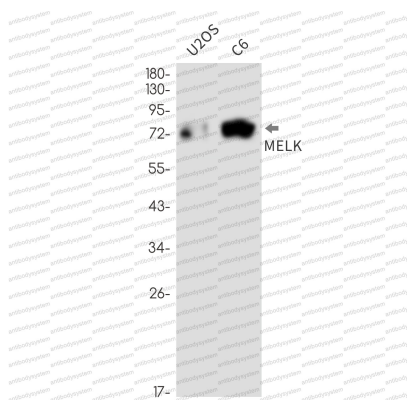
Stability and Storage

Use a manual defrost freezer and avoid repeated freeze thaw cycles. Store at 4 °C for frequent use. Store at -20 °C for twelve months from the date of receipt.

Note

For research use only.

Data Image



Western blot

Western blot analysis of MELK in U2OS, C6 lysates using MELK antibody.