

Anti-ENT2/SLC29A2 Antibody (R2F52)

Summary

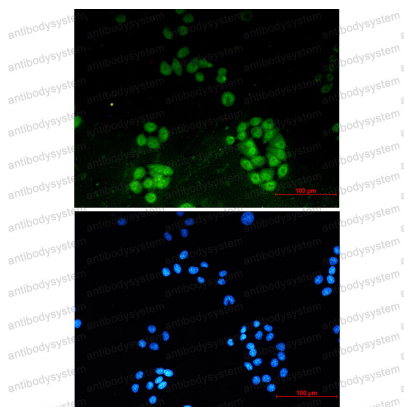
Catalog No.	RHG82301
Clone ID	R2F52
Host species	Rabbit
Tested applications	IF: 1:50-1:200, IHC: 1:50-1:100, WB: 1:500-1:1000
Species reactivity	Human
Form	Liquid
Storage buffer	0.01M PBS, pH 7.4, 0.05% BSA, 50% Glycerol, 0.05% Sodium azide.
Concentration	1 mg/ml
Purity	>95% by SDS-PAGE.
Clonality	Monoclonal
Isotype	IgG
Applications	IF, IHC, WB
Target	Equilibrative nitrobenzylmercaptapurine riboside-insensitive nucleoside transporter, 36 kDa nucleolar protein HNP36, ENT2, Equilibrative nucleoside transporter 2, SLC29A2, Hydrophobic nucleolar protein, 36 kDa, Equilibrative NBMPR-insensitive nucleoside transporter, Nucleoside transporter, ei-type, Delayed-early response protein 12, Solute carrier family 29 member 2, HNP36, DER12
Purification	Protein A/G purified from cell culture supernatant.
Endotoxin level	Please contact with the lab for this information.
Accession	Q14542

Stability and Storage

Use a manual defrost freezer and avoid repeated freeze thaw cycles. Store at 4 °C for frequent use. Store at -20 °C for twelve months from the date of receipt.

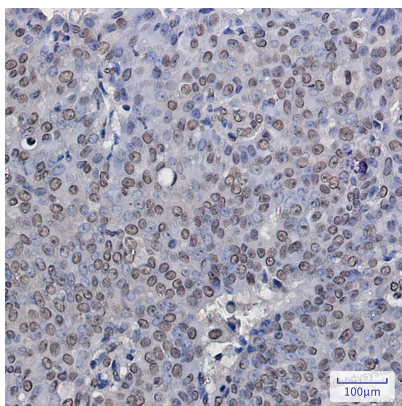
Note

For research use only.

Data Image

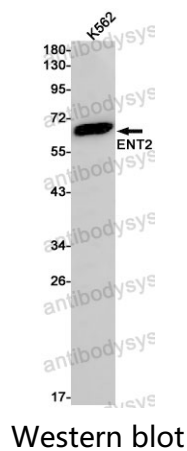
Immunofluorescence

Immunocytochemistry analysis of ENT2 (green) in Hela using ENT2 antibody, and DAPI(blue)



Immunohistochemical

Immunohistochemistry analysis of paraffin-embedded Human breast cancer using ENT2 antibody. High-pressure and temperature Sodium Citrate pH 6.0 was used for antigen retrieval.



Western blot analysis of ENT2 in K562 lysates using ENT2 antibody.