

Anti-ENT2/SLC29A2 Antibody (R2F51)

Summary

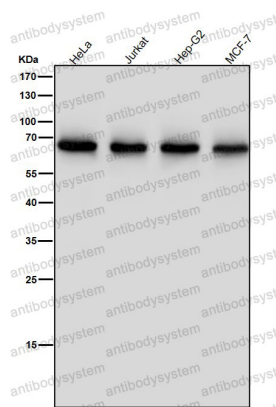
Catalog No.	RHG82302
Clone ID	R2F51
Host species	Rabbit
Tested applications	FCM: 1:20-1:100, IF: 1:50-1:200, IHC: 1:100-1:200, WB: 1:1000-1:2000
Species reactivity	Human, Mouse, Rat
Form	Liquid
Storage buffer	0.01M PBS, pH 7.4, 0.05% BSA, 50% Glycerol, 0.05% Sodium azide.
Concentration	1 mg/ml
Purity	>95% by SDS-PAGE.
Clonality	Monoclonal
Isotype	IgG
Applications	FCM, IF, IHC, WB
Target	Equilibrative nitrobenzylmercaptapurine riboside-insensitive nucleoside transporter, 36 kDa nucleolar protein HNP36, ENT2, Equilibrative nucleoside transporter 2, SLC29A2, Hydrophobic nucleolar protein, 36 kDa, Equilibrative NBMPR-insensitive nucleoside transporter, Nucleoside transporter, ei-type, Delayed-early response protein 12, Solute carrier family 29 member 2, HNP36, DER12
Purification	Protein A/G purified from cell culture supernatant.
Endotoxin level	Please contact with the lab for this information.
Accession	Q14542

Stability and Storage

Use a manual defrost freezer and avoid repeated freeze thaw cycles. Store at 4 °C for frequent use. Store at -20 °C for twelve months from the date of receipt.

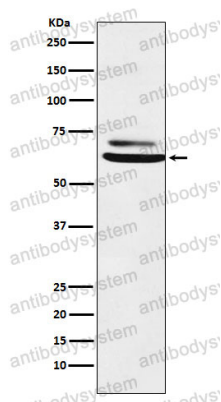
Note

For research use only.

Data Image

Western blot

All lanes use the Antibody at 1:2K dilution for 1 hour at room temperature.



Western blot

Western blot analysis of ENT2 expression in K562 cell lysate.