

Anti-HLTF Antibody (R2F49)

Summary

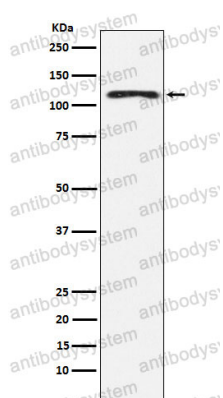
Catalog No.	RHG81802
Clone ID	R2F49
Host species	Rabbit
Tested applications	IF: 1:50-1:200, IHC: 1:100-1:200, WB: 1:1000-1:2000
Species reactivity	Human, Rat
Form	Liquid
Storage buffer	0.01M PBS, pH 7.4, 0.05% BSA, 50% Glycerol, 0.05% Sodium azide.
Concentration	1 mg/ml
Purity	>95% by SDS-PAGE.
Clonality	Monoclonal
Isotype	IgG
Applications	IF, IHC, WB
Target	HIP116, RING-type E3 ubiquitin transferase HLTF, SNF2L3, DNA-binding protein/plasminogen activator inhibitor 1 regulator, HLTF, Sucrose nonfermenting protein 2-like 3, ZBU1, SWI/SNF-related matrix-associated actin-dependent regulator of chromatin subfamily A member 3, Helicase-like transcription factor, RING finger protein 80, SMARCA3, HIP116A, RNF80
Purification	Protein A/G purified from cell culture supernatant.
Endotoxin level	Please contact with the lab for this information.
Accession	Q14527

Stability and Storage

Use a manual defrost freezer and avoid repeated freeze thaw cycles. Store at 4 °C for frequent use. Store at -20 °C for twelve months from the date of receipt.

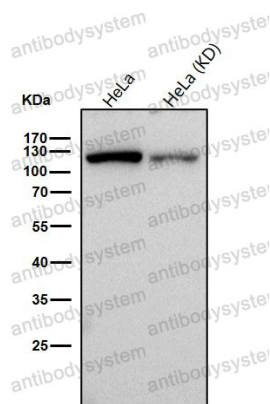
Note

For research use only.

Data Image

Western blot

Western blot analysis of HLTF expression in K562 cell lysate.



Western blot

All lanes use the Antibody at 1:2K dilution for 1 hour at room temperature.