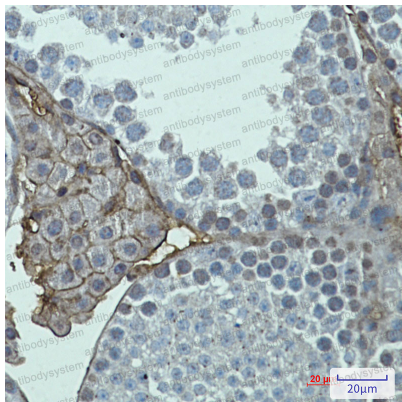


Anti-GRM2 Antibody (R2F42)

Summary

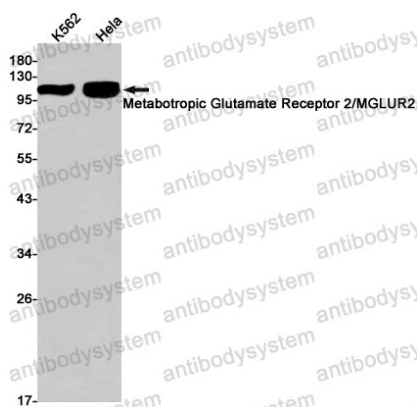
Catalog No.	RHG79402
Clone ID	R2F42
Host species	Rabbit
Tested applications	IHC: 1:50-1:100, WB: 1:500-1:1000
Species reactivity	Human, Mouse
Form	Liquid
Storage buffer	0.01M PBS, pH 7.4, 0.05% BSA, 50% Glycerol, 0.05% Sodium azide.
Concentration	1 mg/ml
Purity	>95% by SDS-PAGE.
Clonality	Monoclonal
Isotype	IgG
Applications	IHC, WB
Target	Metabotropic glutamate receptor 2, GRM2, mGluR2, GPRC1B, MGLUR2
Purification	Protein A/G purified from cell culture supernatant.
Endotoxin level	Please contact with the lab for this information.
Accession	Q14416
Stability and Storage	Use a manual defrost freezer and avoid repeated freeze thaw cycles. Store at 4 °C for frequent use. Store at -20 °C for twelve months from the date of receipt.
Note	For research use only.

Data Image



Immunohistochemical

Immunohistochemistry analysis of paraffin-embedded mouse testis using Metabotropic Glutamate Receptor 2 antibody. High-pressure and temperature Sodium Citrate pH 6.0 was used for antigen retrieval.



Western blot

Western blot analysis of Metabotropic Glutamate Receptor 2 in K562, HeLa lysates using Metabotropic Glutamate Receptor 2 antibody.