

Anti-FKBP8 Antibody (R2F35)

Summary

Catalog No.	RHG77801
Clone ID	R2F35
Host species	Rabbit
Tested applications	FCM: 1:20-1:100, IF: 1:50-1:200, WB: 1:1000-1:2000
Species reactivity	Human
Form	Liquid
Storage buffer	0.01M PBS, pH 7.4, 0.05% BSA, 50% Glycerol, 0.05% Sodium azide.
Concentration	1 mg/ml
Purity	>95% by SDS-PAGE.
Clonality	Monoclonal
Isotype	IgG
Applications	FCM, IF, WB
Target	PPIase FKBP8, FKBP-38, 38 kDa FK506-binding protein, FKBP-8, FKBP38, Rotamase, FKBP8, hFKBP38, FKBP38, Peptidyl-prolyl cis-trans isomerase FKBP8, FK506-binding protein 8, 38 kDa FKBP
Purification	Protein A/G purified from cell culture supernatant.
Endotoxin level	Please contact with the lab for this information.
Accession	Q14318

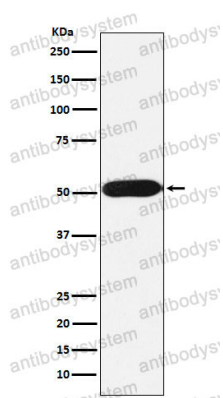
Stability and Storage

Use a manual defrost freezer and avoid repeated freeze thaw cycles. Store at 4 °C for frequent use. Store at -20 °C for twelve months from the date of receipt.

Note

For research use only.

Data Image



Western blot

Western blot analysis of FKBP38 expression in Jurkat cell lysate.