

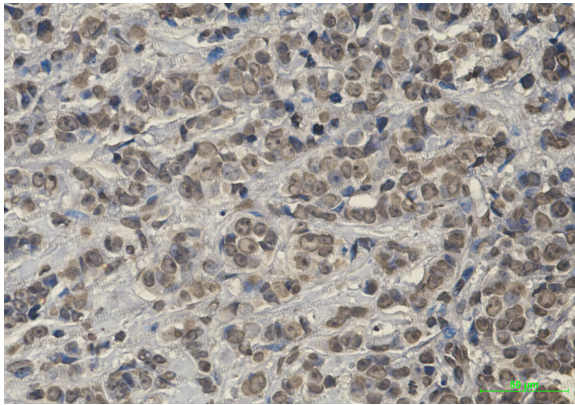
Anti-KEAP1 Antibody (R2F23)

Summary

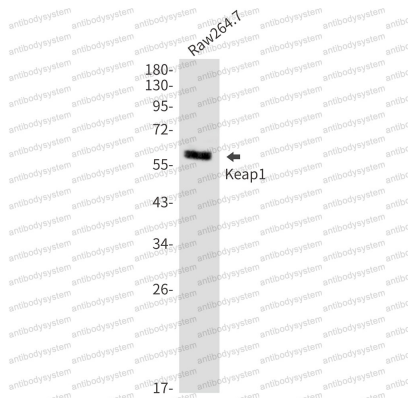
| | |
|------------------------------|-----------------------------------------------------------------------------------------------------------------------------------------------------------------|
| Catalog No. | RHG72102 |
| Clone ID | R2F23 |
| Host species | Rabbit |
| Tested applications | IHC: 1:50-1:100, WB: 1:500-1:1000 |
| Species reactivity | Human, Mouse |
| Form | Liquid |
| Storage buffer | 0.01M PBS, pH 7.4, 0.05% BSA, 50% Glycerol, 0.05% Sodium azide. |
| Concentration | 1 mg/ml |
| Purity | >95% by SDS-PAGE. |
| Clonality | Monoclonal |
| Isotype | IgG |
| Applications | IHC, WB |
| Target | INrf2, INRF2, KLHL19, KEAP1, KIAA0132, Kelch-like ECH-associated protein 1, Cytosolic inhibitor of Nrf2, Kelch-like protein 19 |
| Purification | Protein A/G purified from cell culture supernatant. |
| Endotoxin level | Please contact with the lab for this information. |
| Accession | Q14145 |
| Stability and Storage | Use a manual defrost freezer and avoid repeated freeze thaw cycles. Store at 4 °C for frequent use. Store at -20 °C for twelve months from the date of receipt. |

Note

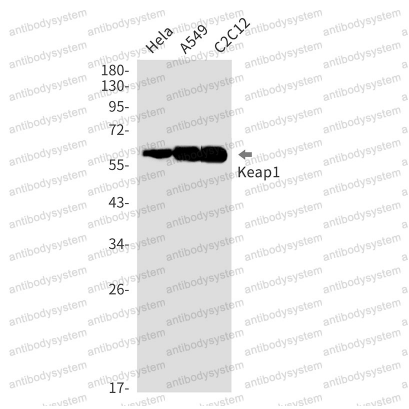
For research use only.

Data Image**Immunohistochemical**

Immunohistochemistry analysis of paraffin-embedded Human breast cancer using Keap1 antibody. High-pressure and temperature Sodium Citrate pH 6.0 was used for antigen retrieval.

**Western blot**

Western blot analysis of Keap1 in Raw264.7 lysates using Keap1 antibody.



Western blot

Western blot analysis of Keap1 in Hela, A549, C2C12 lysates using Keap1 antibody.