

Anti-SCARB2/CD36L2 Antibody (R2F16)

Summary

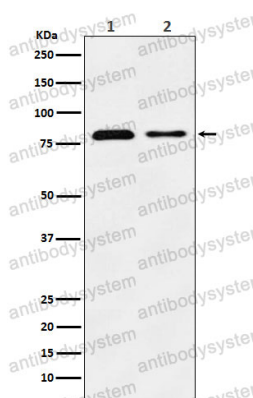
Catalog No.	RHG70402
Clone ID	R2F16
Host species	Rabbit
Tested applications	FCM: 1:20-1:100, IHC: 1:100-1:200, IP: 1:20-1:50, WB: 1:1000-1:2000
Species reactivity	Human, Mouse, Rat
Form	Liquid
Storage buffer	0.01M PBS, pH 7.4, 0.05% BSA, 50% Glycerol, 0.05% Sodium azide.
Concentration	1 mg/ml
Purity	>95% by SDS-PAGE.
Clonality	Monoclonal
Isotype	IgG
Applications	FCM, IHC, IP, WB
Target	CD36, 85 kDa lysosomal membrane sialoglycoprotein, CD36 antigen-like 2, CD36L2, SCARB2, Lysosome membrane protein 2, LIMP II, Scavenger receptor class B member 2, Lysosome membrane protein II, LIMPII, LIMP2, LGP85
Purification	Protein A/G purified from cell culture supernatant.
Endotoxin level	Please contact with the lab for this information.
Accession	Q14108

Stability and Storage

Use a manual defrost freezer and avoid repeated freeze thaw cycles. Store at 4 °C for frequent use. Store at -20 °C for twelve months from the date of receipt.

Note

For research use only.

Data Image

Western blot

Western blot analysis of LIMPII expression in (1) HeLa cell lysate; (2) Mouse liver lysate.