

Anti-CAMK1 Antibody (R2F15)

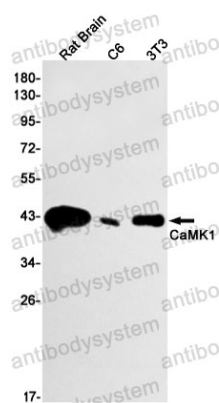
Summary

Catalog No.	RHG69101
Clone ID	R2F15
Host species	Rabbit
Tested applications	WB: 1:500-1:1000
Species reactivity	Mouse, Rat
Form	Liquid
Storage buffer	0.01M PBS, pH 7.4, 0.05% BSA, 50% Glycerol, 0.05% Sodium azide.
Concentration	1 mg/ml
Purity	>95% by SDS-PAGE.
Clonality	Monoclonal
Isotype	IgG
Applications	WB
Target	CaM-KI, CaM kinase I alpha, CAMK1, CaMKI-alpha, Calcium/calmodulin-dependent protein kinase type 1, CaM kinase I
Purification	Protein A/G purified from cell culture supernatant.
Endotoxin level	Please contact with the lab for this information.
Accession	Q14012
Stability and Storage	Use a manual defrost freezer and avoid repeated freeze thaw cycles. Store at 4 °C for frequent use. Store at -20 °C for twelve months from the date of receipt.

Note

For research use only.

Data Image



Western blot

Western blot analysis of CaMK1 in rat Brain, C6, 3T3 lysates using CaMK1 antibody.