

# Anti-RUNX2 Antibody (R2F10)

## Summary

---

<b>Catalog No.</b>	RHG67901
<b>Clone ID</b>	R2F10
<b>Host species</b>	Rabbit
<b>Tested applications</b>	IF: 1:50-1:200, IHC: 1:100-1:200, WB: 1:1000-1:2000
<b>Species reactivity</b>	Human, Mouse, Rat
<b>Form</b>	Liquid
<b>Storage buffer</b>	0.01M PBS, pH 7.4, 0.05% BSA, 50% Glycerol, 0.05% Sodium azide.
<b>Concentration</b>	1 mg/ml
<b>Purity</b>	>95% by SDS-PAGE.
<b>Clonality</b>	Monoclonal
<b>Isotype</b>	IgG
<b>Applications</b>	IF, IHC, WB
<b>Target</b>	AML3, OSF2, RUNX2, Core-binding factor subunit alpha-1, PEA2-alpha A, CBF-alpha-1, Osteoblast-specific transcription factor 2, Oncogene AML-3, CBFA1, Runt-related transcription factor 2, PEBP2A, OSF-2, SL3-3 enhancer factor 1 alpha A subunit, PEBP2-alpha A, Acute myeloid leukemia 3 protein, Polyomavirus enhancer-binding protein 2 alpha A subunit, SL3/AKV core-binding factor alpha A subunit
<b>Purification</b>	Protein A/G purified from cell culture supernatant.
<b>Endotoxin level</b>	Please contact with the lab for this information.
<b>Accession</b>	Q13950

**Stability and Storage**

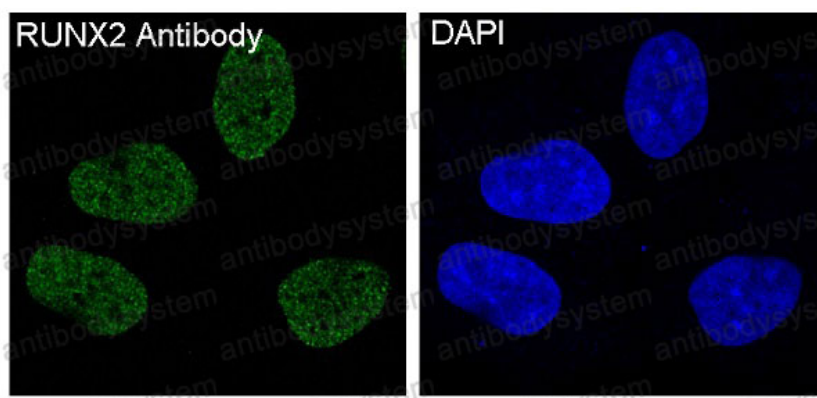
Use a manual defrost freezer and avoid repeated freeze thaw cycles. Store at 4 °C for frequent use. Store at -20 °C for twelve months from the date of receipt.

**Note**

For research use only.

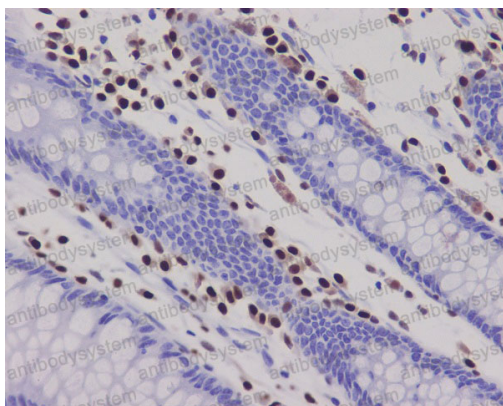
**Data Image**

---



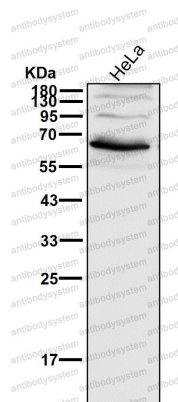
Immunofluorescent analysis of Saos-2 cells, using RUNX2 Antibody.

Immunofluorescence



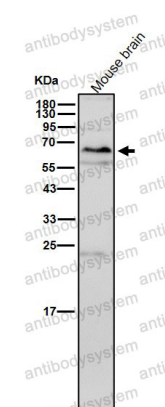
Immunohistochemical analysis of paraffin-embedded human colon, using RUNX2 Antibody.

Immunohistochemical



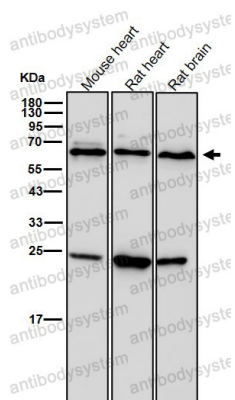
Western blot

All lanes use the Antibody at 1:1K dilution for 1 hour at room temperature.



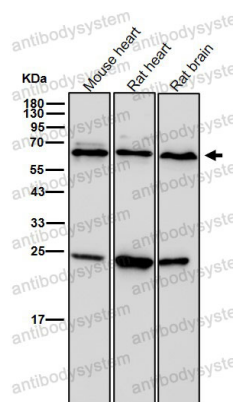
Western blot

All lanes use the Antibody at 1:1K dilution for 1 hour at room temperature.



Western blot

All lanes use the Antibody at 1:1K dilution for 1 hour at room temperature.



Western blot

All lanes use the Antibody at 1:1K dilution  
for 1 hour at room temperature.