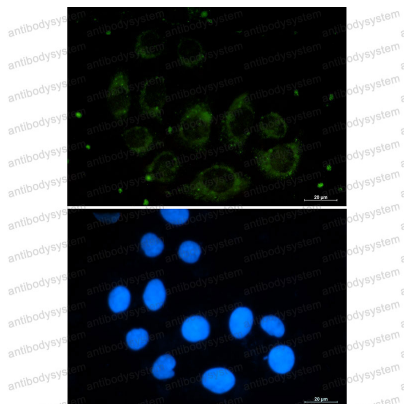


Anti-CUX1 Antibody (R2F09)

Summary

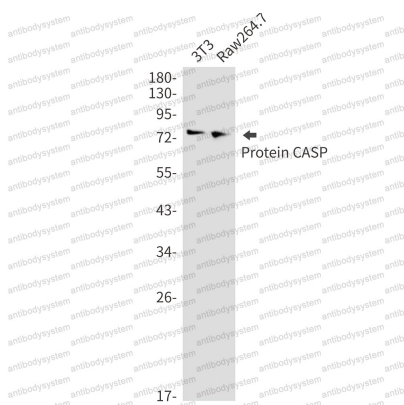
Catalog No.	RHG67801
Clone ID	R2F09
Host species	Rabbit
Tested applications	IF: 1:50-1:200, IP: 1:20, WB: 1:500-1:1000
Species reactivity	Human, Mouse, Rat
Form	Liquid
Storage buffer	0.01M PBS, pH 7.4, 0.05% BSA, 50% Glycerol, 0.05% Sodium azide.
Concentration	1 mg/ml
Purity	>95% by SDS-PAGE.
Clonality	Monoclonal
Isotype	IgG
Applications	IF, IP, WB
Target	Protein CASP, CUTL1, CUX1
Purification	Protein A/G purified from cell culture supernatant.
Endotoxin level	Please contact with the lab for this information.
Accession	Q13948
Stability and Storage	Use a manual defrost freezer and avoid repeated freeze thaw cycles. Store at 4 °C for frequent use. Store at -20 °C for twelve months from the date of receipt.
Note	For research use only.

Data Image



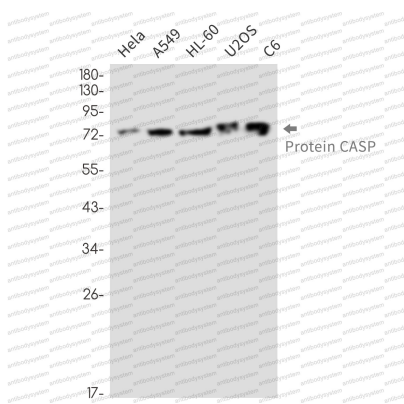
Immunofluorescence

Immunocytochemistry analysis of Protein CASP (green) in A549 using Protein CASP antibody, and DAPI(blue).



Western blot

Western blot analysis of Protein CASP in 3T3, Raw264.7 lysates using Protein CASP antibody.



Western blot

Western blot analysis of Protein CASP in HeLa, A549, HL-60, U2OS, C6 lysates using Protein CASP antibody