

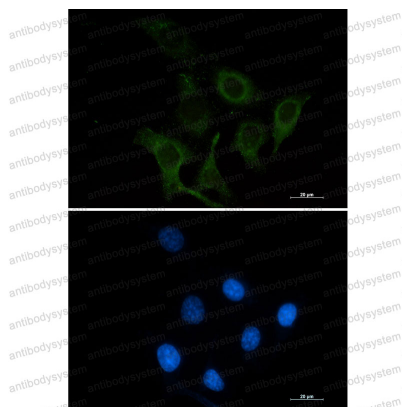
Anti-CD166/ALCAM Antibody (R2E99)

Summary

Catalog No.	RHG64001
Clone ID	R2E99
Host species	Rabbit
Tested applications	IF: 1:50-1:200, IHC: 1:50-1:100, IP: 1:20, WB: 1:500-1:1000
Species reactivity	Human, Mouse, Rat
Form	Liquid
Storage buffer	0.01M PBS, pH 7.4, 0.05% BSA, 50% Glycerol, 0.05% Sodium azide.
Concentration	1 mg/ml
Purity	>95% by SDS-PAGE.
Clonality	Monoclonal
Isotype	IgG
Applications	IF, IHC, IP, WB
Target	Activated leukocyte cell adhesion molecule, MEMD, CD166 antigen, ALCAM, CD166
Purification	Protein A/G purified from cell culture supernatant.
Endotoxin level	Please contact with the lab for this information.
Accession	Q13740
Stability and Storage	Use a manual defrost freezer and avoid repeated freeze thaw cycles. Store at 4 °C for frequent use. Store at -20 °C for twelve months from the date of receipt.

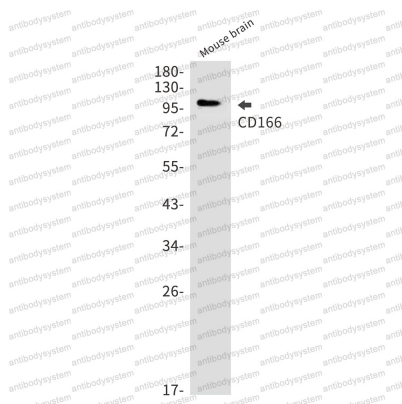
Note For research use only.

Data Image



Immunofluorescence

Immunocytochemistry analysis of CD166 (green) in SKOV-3 using CD166 antibody, and DAPI(blue).



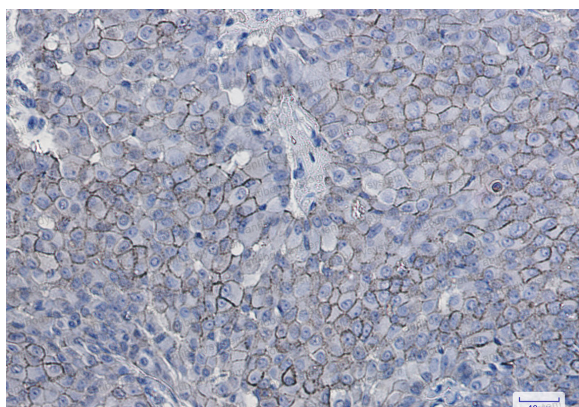
Western blot

Western blot analysis of CD166 in mouse brain lysates using CD166 antibody.



Western blot

Western blot analysis of CD166 in rat Brain, C6 lysates using CD166 antibody



Western blot

Immunohistochemistry analysis of paraffin-embedded Human breast cancer using CD166 antibody. High-pressure and temperature Sodium Citrate pH 6.0 was used for antigen retrieval.