

Anti-SLC12A1 Antibody (R2E86)

Summary

Catalog No.	RHG61701
Clone ID	R2E86
Host species	Rabbit
Tested applications	WB: 1:500-1:1000
Species reactivity	Human
Form	Liquid
Storage buffer	0.01M PBS, pH 7.4, 0.05% BSA, 50% Glycerol, 0.05% Sodium azide.
Concentration	1 mg/ml
Purity	>95% by SDS-PAGE.
Clonality	Monoclonal
Isotype	IgG
Applications	WB
Target	Solute carrier family 12 member 1, NKCC2, Bumetanide-sensitive sodium-(potassium)-chloride cotransporter 2, SLC12A1, Kidney-specific Na-K-Cl symporter
Purification	Protein A/G purified from cell culture supernatant.
Endotoxin level	Please contact with the lab for this information.
Accession	Q13621

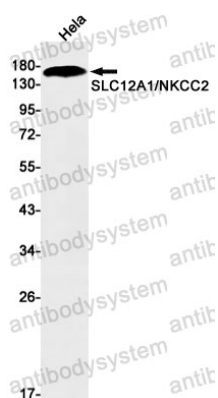
Stability and Storage

Use a manual defrost freezer and avoid repeated freeze thaw cycles. Store at 4 °C for frequent use. Store at -20 °C for twelve months from the date of receipt.

Note

For research use only.

Data Image



Western blot

Western blot analysis of SLC12A1/NKCC2 in HeLa lysates using SLC12A1 antibody.